

GLÖRIA
HOTELS & RESORTS

FACTSHEET CONCEPT

2024 SUMMER
2024/2025 WINTER



DOWNLOAD
HOTEL INFORMATION



CONTENTS

GLORIA SERENITY RESORT	
GENERAL INFORMATION	03
ACCOMMODATION	04-09
ROOM OVERVIEW	10
VIP CONCEPT & PRIVILEGED SERVICES	10
SPECIAL ROOM TYPES PRIVILEGED SERVICES	11
FOOD AND BEVERAGE SERVICES	11
BARS	12
POOLS AND BEACH	12
SERENITY SPA	13
MEETINGS, ORGANIZATIONS AND WEDDINGS	13
MAP	14
GLORIA GOLF RESORT	
GENERAL INFORMATION	15
ACCOMMODATION	16-20
ROOM OVERVIEW	20
VIP CONCEPT & PRIVILEGED SERVICES	21
SPECIAL ROOM TYPES PRIVILEGED SERVICES	21
FOOD AND BEVERAGE SERVICES	22
BARS	22
POOLS AND BEACH	23
AQUAPARK	24
LA SOURCE SPA	25
MEETINGS, ORGANISATIONS AND WEDDINGS	25
MAP	26
GLORIA VERDE RESORT	
GENERAL INFORMATION	27
ACCOMODATION	28-31
ROOM OVERVIEW	32
VIP CONCEPT & PRIVILEGED SERVICES	32
SPECIAL ROOM TYPES PRIVILEGED SERVICES	33
FOOD AND BEVERAGE SERVICES	33
BARS	34
POOLS AND BEACH	34
AQUAPARK	35
ASKLEPION SPA & THALASSO	35
MAP	36
MEETINGS, ORGANISATIONS AND WEDDINGS	37
THE WORLD OF GLORIA	
CHILDREN AND TEENS ACTIVITIES	38
BABY AND CHILD NUTRITION	38
GLORIA EVENT & FIT GLORIA	39
GLORIA GOLF CLUB	40
GLORIA SPORTS ARENA	40
GLORIAN MEMBER CLUB	41
WALKING AND RUNNING PATH	41
MAP	42

Gloria Hotels & Resorts reserves the right to make changes without notice. Gloria Hotels & Resorts is a brand of Özaltın Holding.

WELCOME TO GLORIA HOTELS & RESORTS!



The Gloria Hotels & Resorts brand, owned by Özaltın Holding, was established on an area of approximately 2,400,000 m² in Antalya - Belek and has been operating since 1997.

With a total of 1275 rooms, suites and ultra-luxury villas, Gloria Hotels & Resorts, with 30 different room categories, has been created with the aim of offering its guests a personalised and highly comfortable service. Gloria Hotels & Resorts offers its guests a privileged holiday experience in every season of the year, thanks to its location and the opportunity to be alone with nature at the same time.

Gloria Hotels & Resorts is known for its Gloria Serenity Resort, Gloria Golf Resort and Gloria Verde Resort brands, which have been serving in the tourism sector for many years, winning prestigious awards in different categories and being the three most successful 5-star hotels in their class. It is also a leader in the sector with the Gloria Sports Arena, one of the most exclusive sports investments in Europe, a modern complex where sports can be practised in more than 50 disciplines..

Designed by the famous French architect Michel Gayon, Gloria Golf Club is one of the most important representatives of golf in Turkey and the second largest golf course in Europe, with the only Trackman Driving Range in the region and three golf courses with a total of 45 holes.

Gloria Hotels & Resorts, which continues its activities with its innovations and visionary perspective, has been hosting prestigious organizations for many years with Gloria Convention Centre, as well as meeting all meeting requirements for all needs at international standards.



GLORIA SERENITY RESORT

The Joy of Variety

Gloria Serenity, where peace and luxury are surrounded by the natural colours of the universe, will satisfy your expectations of comfort and taste, as well as your children's enjoyment.



GENERAL INFORMATION

Gloria Serenity Resort opening date: 2007
 Category: 5* Hotel
 Company: Özaltın Holding
 Season: Full Year
 Gloria Hotels & Resorts total area: 2.400.000 m²
 Gloria Serenity Resort area: 205.000 m²
 Address: Belek Mah. Turizm Cad. No: 74/57
 Serik / Antalya / Türkiye
 Telephone: +90 242 710 00 23
 E-mail: info@gloria.com.tr
 Website: www.gloria.com.tr
 WI-FI: Rooms and public areas (free of charge)
 High-speed internet in rooms and public areas (surcharge)
 Credit cards: Visa, Mastercard, Amex
 Languages Spoken: Turkish, English, Russian, German
 To download current pictures, videos, and factsheets: stock.gloria.com.tr

ACCOMMODATION

The facility consists of 1 main building and 97 villas. The main building consists of 5 floors and there are 4 lifts in total, allowing access to each floor.

ACCOMMODATION POLICY

Pets not allowed
 Hotel check-in time: 06:00
 Hotel check-out time: 19:00
 Room check-in time: 14:00
 Room check-out time: 12:00
 Early check-in and late check-out policy: Early check-in or late check-out is subject to a charge according to availability.
 Subject to availability, early check-in before 08:00 or late check-out after 18:00 is charged at 100% of the daily room rate.
 Smoking: The use of tobacco products and electronic cigarettes is not permitted indoors.
 Age limit policy: Guests under 18 years of age are not accommodated without a parent.
 Visitor policy: The admission of visitors to the hotel is subject to a fee. Visitors are required to present their passport or identity card upon arrival. Visitors are not permitted in guest rooms.
 Transfer between hotels: Guests are provided with free shuttle service between Gloria Hotels.

LOCATION & TRANSPORT

Antalya Airport: 40 km
 Gazipaşa Airport: 148 km
 Antalya City Centre: 50 km
 Nearest Settlement Centre: 7 km (Belek)
 Beach: Private sand/gravel beach and 1 pier
 Gloria Golf Club: 1,5 km

ROOM DETAILS

Total Rooms: 367
 Superior Rooms: 250
 Suites: 20
 Villas: 97
 Bed Capacity: 971
 Floor Plan: 196 Superior Rooms + 3 Disabled Rooms, 51 Superior Laguna Rooms, 18 Suites, 2 King Suites, 52 Garden Villas, 30 Pool Villas, 10 Deluxe Villas, 1 Serenity Villa, 1 Queen Villa, 1 King Villa, 1 Vip Villa, 1 Presidential Villa

SUPERIOR ROOM

Main building | 39 m² | Garden or pool view
Maximum number of Person: 2 adults + 2 children (0 - 11.99) | 3 adults



ROOM FEATURES

- 1 room
- Smart panel-controlled room lighting
- Smart panel-controlled curtains
- Smart panel-controlled central air conditioning
- Parquet floor
- Wardrobe
- Sitting area with sofa
- Decorative coffee table
- Table and chair set
- Full-length mirror
- Suitcase rack
- Balcony or terrace
- Chairs and coffee table set on the balcony or terrace
- Laundry drying rack on the balcony or terrace

BED

- 2 single beds (120x200) or 1 french bed (180x200)
- Special manufactured bed
- Pillow menu
- Baby Cot (available on request, 70x110)
- Rollaway extra bed (available on request, 80x190)

BATHROOM

- Shower cabin and WC
- Bvlgari bath and shower products
- Baby bath products (optional)
- Children's bathrobe (optional, 2 - 11.99)
- Bathrobe
- Slippers
- Illuminated make-up mirror
- Hair dryer
- Telephone
- Scales

TECHNOLOGY

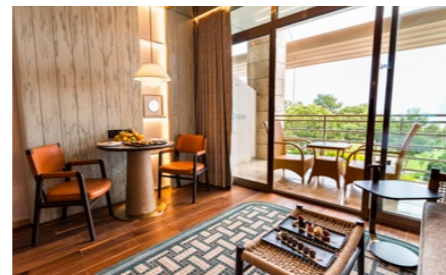
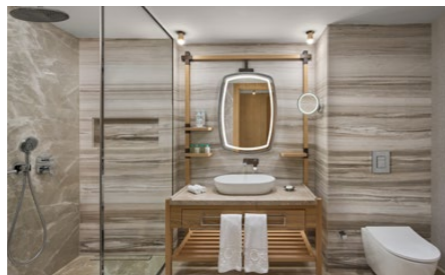
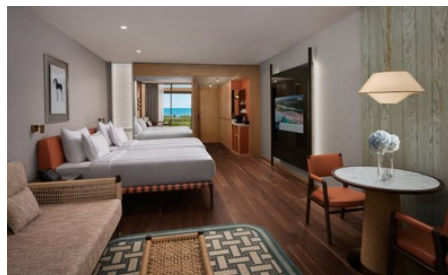
- Smart home control system
- 1 mirror view television (Mirror TV)
- Phone with smart panel
- Digital safe
- Wireless internet access

SERVICES & FACILITIES

- Nespresso capsule coffee machine (with water heating option)
- Organic Herbal tea varieties
- Daily cleaning
- Daily towel change
- Minibar (refilled 1 time a day free of charge)
- Laundry services (extra charge, available between 08:00 - 00:00)



*There are 3 Superior rooms that are tailored to the needs of our disabled guests.



SUPERIOR LAGUNA ROOM

Main building | 39 m² | Direct access to shared pool | Ground floor
Maximum number of Person: 2 adults + 2 children (0 - 11.99) | 3 adults



ROOM FEATURES

- 1 room
- Smart panel-controlled room lighting
- Smart panel-controlled curtains
- Smart panel-controlled central air conditioning
- Parquet floor
- Wardrobe
- Sitting area with sofa
- Decorative coffee table
- Table and chair set
- Full-length mirror
- Suitcase rack
- Terrace
- Sun loungers, chairs and coffee table set on the terrace
- Laundry drying rack on the terrace

BED

- 2 single beds (120x200) or 1 french bed (180x200)
- Special manufactured bed
- Pillow menu
- Baby Cot (available on request, 70x110)
- Rollaway extra bed (available on request, 80x190)

BATHROOM

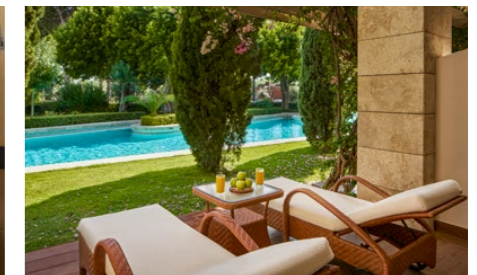
- Shower cabin and WC
- Bvlgari bath and shower products
- Baby bath products (optional)
- Children's bathrobe (optional, 2 - 11.99)
- Bathrobe
- Slippers
- Illuminated make-up mirror
- Hair dryer
- Telephone
- Scales

TECHNOLOGY

- Smart home control system
- 1 mirror view television (Mirror TV)
- Phone with smart panel
- Digital safe
- Wireless internet access

SERVICES & FACILITIES

- Nespresso capsule coffee machine (with water heating option)
- Organic Herbal tea varieties
- Daily cleaning
- Daily towel change
- Minibar (refilled 1 time a day free of charge)
- Laundry services (extra charge, available between 08:00 - 00:00)



SUITE

Main building | 65 m² | Garden or pool view
Maximum number of Person: 2 adults + 2 children (0 - 11.99) | 3 adults + 1 child (0 - 11.99)



ROOM FEATURES

- 2 rooms: 1 bedroom & 1 living room
- Smart panel-controlled room lighting
- Smart panel-controlled curtains
- Smart panel-controlled central air conditioning
- Parquet floor
- Sitting area with sofa and single armchair
- Table chair set
- Decorative coffee table
- Wardrobe
- Full-length mirror
- Suitcase rack
- Balcony or terrace
- Chairs and coffee table set on the balcony or terrace
- Laundry drying rack on the balcony or terrace

BED

- 1 french bed (180x200)
- Special manufactured bed
- Pillow menu
- Baby Cot (available on request, 70x110)
- Rollaway ekstra bed (available on request, 80x190)

BATHROOM

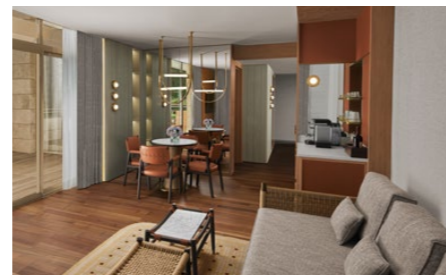
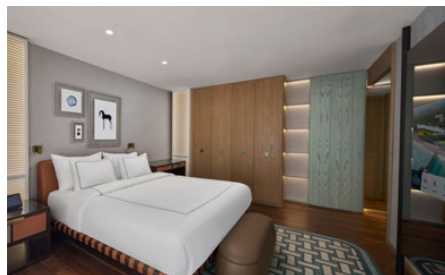
- Shower cabin and WC (single bathroom)
- Guest washbasin and WC
- Bvlgari bath and shower products
- Baby bath products (optional)
- Children's bathrobe (optional, 2 - 11.99)
- Bathrobe
- Slippers
- Illuminated make-up mirror
- Hair dryer
- Telephone
- Scales

TECHNOLOGY

- Smart home control system
- 1 mirror-view television (Mirror TV) and 1 LCD TV
- Phone with smart panel
- Digital safe
- Wireless internet access

SERVICES & FACILITIES

- Nespresso capsule coffee machine (with water heating option)
- Organic Herbal tea varieties
- Daily cleaning
- Daily towel change
- Minibar (refilled 1 time a day free of charge)
- Laundry services (surcharge, available between 08:00 - 00:00)



KING SUITE

Main building | 160 m² | Sea and garden view
Maximum number of Person: 4 adults + 2 children (0 - 11.99) | 5 adults



ROOM FEATURES

- 3 rooms: 2 bedrooms & 1 living room
- Smart panel-controlled room lighting
- Smart panel-controlled curtains
- Smart panel-controlled central air conditioning
- Parquet floor
- Living room: dining table and chair set, sofa and 2 single armchairs, sitting group with coffee table, coffee and tea corner with bench and sink
- First bedroom: 1 french bed, sitting area with sofa and 2 single armchairs, coffee table, desk, 2 dressing areas, balcony
- Second bedroom: 2 single beds, dressing room, direct access to balcony with whirlpool
- Wardrobe
- Full-length mirror
- Suitcase rack
- 2 balconies, 1 with whirlpool
- Set of chairs and coffee table on the balcony
- Laundry drying rack on the balcony

BED

- First bedroom: 1 french bed (180x200)
- Second bedroom: 2 single beds (120x200)
- Special manufactured bed
- Pillow menu
- Baby Cot (available on request, 70x110)
- Rollaway ekstra bed (available on request, 80x190)

BATHROOM

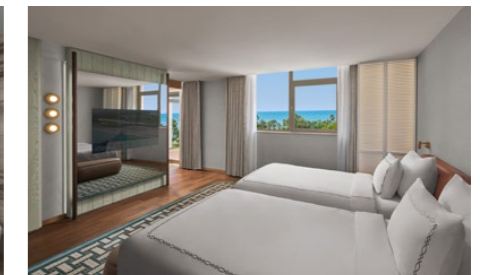
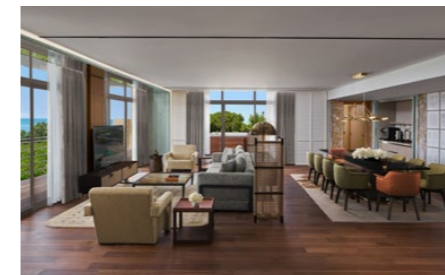
- 3 separate bathrooms and 3 WCs
- First bathroom: shower cabin, bath, double washbasin and WC
- Second bathroom: shower cabin and WC
- Third bathroom: shower cabin and WC
- Bvlgari bath and shower products
- Baby bath products (optional)
- Children's bathrobe (optional, 2 - 11.99)
- Bathrobe
- Slippers
- Illuminated make-up mirror
- Hair dryer
- Telephone
- Scales

TECHNOLOGY

- Smart home control system
- 1 mirror-view television (Mirror TV) and 2 LCD TV's
- Phone with smart panel
- Digital safe
- High-speed wireless internet access

SERVICES & FACILITIES

- Nespresso capsule coffee machine (with water heating option)
- Electric teapot
- Organic Herbal tea varieties
- Iron and ironing board
- Daily cleaning
- Daily towel change
- Turndown service
- Minibar (refilled 1 time a day free of charge)
- Laundry services (extra charge, available between 08:00 - 00:00)



GARDEN VILLA

Garden | Duplex | 86 m² | Garden view
Maximum number of Person: 4 adults + 2 children (0 - 11.99) | 5 adults



ROOM FEATURES

- 3 rooms: 2 bedrooms & 1 living room
- Smart panel-controlled room lighting
- Smart panel-controlled curtains
- VRF (individual) air conditioning with smart panel-control
- Marble floor (on the ground floor)
- Parquet floor (upstairs)
- Living room: bar corner, dining table and chair set, sitting area and coffee table
- First bedroom: 1 french bed, bar corner, dressing table with pouf and mirror
- Second bedroom: 2 single beds
- Wardrobe
- Full-length mirror
- Suitcase rack
- Private terrace with whirlpool
- Table and chair set on the terrace
- Laundry drying rack on the terrace

BED

- First bedroom: 1 french bed (200x200)
- Second bedroom: 2 single beds (120x200)
- Special manufactured bed
- Pillow menu
- Baby Cot (available on request, 70x110)
- Rollaway ekstra bed (available on request, 80x190)

BATHROOM

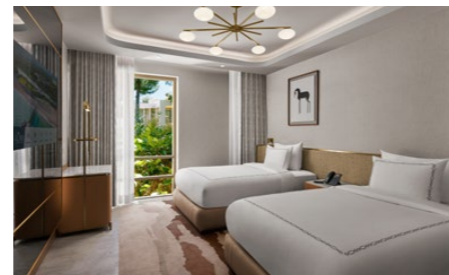
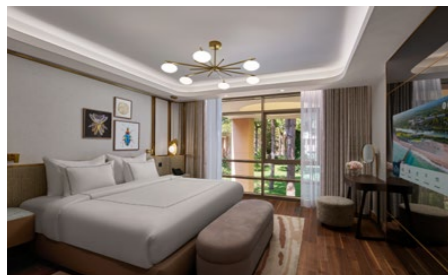
- 2 separate bathrooms and 2 WCs
- First bathroom: double washbasin, shower cabin and WC
- Second bathroom: shower cabin and WC
- Bvlgari bath and shower products
- Baby bath products (optional)
- Children's bathrobe (optional, 2 - 11.99)
- Bathrobe
- Slippers
- Hair dryer
- Telephone
- Scales

TECHNOLOGY

- Smart home control system
- 3 mirror-view televisions (Mirror TV)
- USB socket
- Phone with smart panel
- Digital safe
- Wireless internet access

SERVICES & FACILITIES

- Nespresso capsule coffee machine (with water heating option)
- Organic Herbal tea varieties
- Iron and ironing board
- Daily cleaning
- Daily towel change
- Turndown service
- Minibar (refilled 1 time a day free of charge)
- Laundry services (surcharge, available between 08:00 - 00:00)



POOL VILLA

Garden | Duplex | 86 m² | Shared pool view
Maximum number of Person: 4 adults + 2 children (0 - 11.99) | 5 adults



ROOM FEATURES

- 3 rooms: 2 bedrooms & 1 living room
- Smart panel-controlled room lighting
- Smart panel-controlled curtains
- VRF (individual) air conditioning with smart panel control
- Marble floor (on the ground floor)
- Parquet floor (upstairs)
- Living room: bar corner, dining table and chair set, sitting area and coffee table
- First bedroom: 1 french bed, bar corner, dressing table with pouf and mirror
- Second bedroom: 2 single beds
- Wardrobe
- Full-length mirror
- Suitcase rack
- Private terrace with whirlpool
- Table and chair set on the terrace
- Laundry drying rack on the terrace

BED

- First bedroom: 1 french bed (200x200)
- Second bedroom: 2 single beds (120x200)
- Special manufactured bed
- Pillow menu
- Baby Cot (available on request, 70x110)
- Rollaway ekstra bed (available on request, 80x190)

BATHROOM

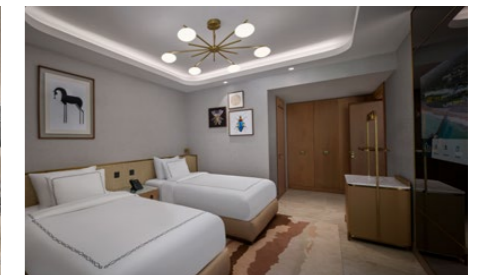
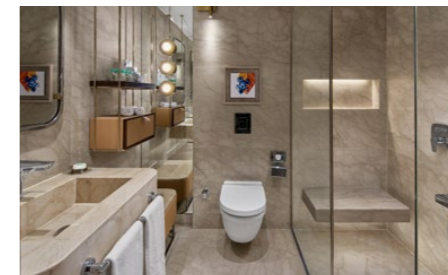
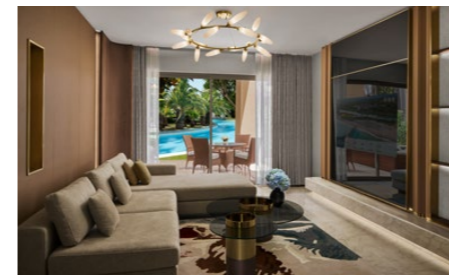
- 2 separate bathrooms and 2 WCs
- First bathroom: double washbasin, shower cabin and WC
- Second bathroom: shower cabin and WC
- Bvlgari bath and shower products
- Baby bath products (optional)
- Children's bathrobe (optional, 2 - 11.99)
- Bathrobe
- Slippers
- Hair dryer
- Telephone
- Scales

TECHNOLOGY

- Smart home control system
- 3 mirror-view televisions (Mirror TV)
- USB socket
- Phone with smart panel
- Digital safe
- Wireless internet access

SERVICES & FACILITIES

- Nespresso capsule coffee machine (with water heating option)
- Organic Herbal tea varieties
- Iron and ironing board
- Daily cleaning
- Daily towel change
- Turndown service
- Minibar (refilled 1 time a day free of charge)
- Laundry services (surcharge, available between 08:00 - 00:00)



DELUXE VILLA

Garden | Duplex | 200 m² | Garden, golf course and private pool view
Maximum number of Person: 6 adults + 2 children (0 - 11.99) | 7 adults



ROOM FEATURES

- 4 rooms: 3 bedrooms & 1 living room
- Smart panel-controlled room lighting
- Smart panel-controlled tulle and background curtains
- VRF (individual) air conditioning with smart panel control
- Marble floor (on the ground floor)
- Parquet floor (upstairs)
- Living room: bar corner, dining table and chair set, sitting area, 2 single armchairs and coffee table
- First bedroom: 1 french bed, bar corner, vanity table with pouf and mirror, single armchair, lounge chair and dressing area
- Second bedroom: 2 single beds, single armchair, and coffee table
- Third bedroom: 2 single beds, dressing table with pouf and mirror
- Wardrobe
- Full-length mirror
- Suitcase rack
- Private terrace
- Table and chair set on the terrace
- Laundry drying rack on the terrace
- Baby crib on the terrace
- Private outdoor pool (fresh water, sea water and heating options, 140 cm deep, 52 m²)
- Hammock and sunbeds by the pool

BED

- Upstairs:
 - 1st bedroom: 1 french bed (180x210)
 - 2nd bedroom: 2 single beds (120x210)
- Ground floor:
 - 3rd bedroom: 2 single beds (110x210)
- Special manufactured bed
- Pillow menu
- Baby Cot (available on request, 70x110)
- Rollaway ekstra bed (available on request, 80x190)

BATHROOM

- 4 separate bathrooms and 4 WCs
- Upstairs:
 - 1st bathroom: shower cabin, bathtub, double washbasin, and WC
 - 2nd bathroom: shower cabin and WC
- Ground floor:
 - 3rd bathroom: shower cabin and WC
 - 4th bathroom: shower cabin and WC
- VIP Bvlgari bath and shower products
- Baby bath products (optional)
- Children's bathrobe (optional, 2 - 11.99)
- Bathrobe
- Slippers
- Hair dryer
- Telephone
- Scales

TECHNOLOGY

- Smart home control system
- 4 mirror-view televisions (Mirror TV)
- Bang & Olufsen sound system
- USB socket
- Phone with smart panel
- Digital safe
- High-speed wireless internet access

SERVICES & FACILITIES

- Nespresso capsule coffee machine (with water heating option)
- Organic Herbal tea varieties
- Iron and ironing board
- Daily cleaning
- Daily towel change
- Turndown service
- Minibar (refilled 1 time a day free of charge)
- Laundry services (surcharge, available between 08:00 - 00:00)



SERENITY VILLA

Garden | Duplex | 200 m² | Garden, golf course and private pool view
Maximum number of Person: 6 adults + 2 children (0 - 11.99) | 7 adults



ROOM FEATURES

- 4 rooms: 3 bedrooms & 1 living room
- VRF (individual) air conditioning
- Parquet floor
- Self-catering kitchen
- Living room: dining table and chair set, sitting area, 2 single armchairs and coffee table
- First bedroom: 1 french bed, 2 single armchairs, whirlpool
- Second bedroom: 2 french beds, single armchair and writing desk
- Third bedroom: 2 single beds, single armchair and writing desk
- Wardrobe
- Curtains
- Full-length mirror
- Suitcase rack
- Private terrace
- Table and chair set on the terrace
- Laundry drying rack on the terrace
- Private outdoor pool (fresh water, sea water and heating options, 140 cm deep, 94 m²)
- Sunbeds by the pool

BED

- Upstairs:
 - 1st bedroom: 1 french bed (200x200)
- Ground floor:
 - 2nd bedroom: 2 french beds (160x200)
 - 3rd bedroom: 2 single beds (100x200)
- Special manufactured bed
- Pillow menu
- Baby Cot (available on request, 70x110)
- Rollaway ekstra bed (available on request, 80x190)

BATHROOM

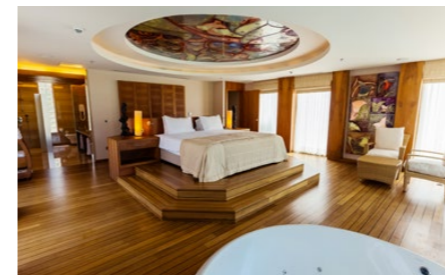
- 3 separate bathrooms and 3 WCs
- Upstairs:
 - 1st bathroom: shower cabin, double washbasin, and WC
- Whirlpool in the bedroom
- Ground floor:
 - 2nd bathroom: shower cabin, whirlpool and WC
 - 3rd bathroom: shower cabin and WC
- VIP Bvlgari bath and shower products
- Baby bath products (optional)
- Children's bathrobe (optional, 2 - 11.99)
- Bathrobe
- Slippers
- Hair dryer
- Telephone
- Scales

TECHNOLOGY

- 4 LCD TVs
- Telephone
- Safe deposit box
- High-speed wireless internet access

SERVICES & FACILITIES

- Nespresso capsule coffee machine (with water heating option)
- Organic Herbal tea varieties
- Iron and ironing board
- Daily cleaning
- Daily towel change
- Turndown service
- Minibar (refilled 1 time a day free of charge)
- Laundry services (extra charge, available between 08:00 - 00:00)



QUEEN VILLA

Garden | Duplex | 250 m² | Garden, golf course and private pool view
Maximum number of Person: 8 adults + 2 children (0 - 11.99) | 8 adults



ROOM FEATURES

- 5 rooms: 4 bedrooms & 1 living room
- VRF (individual) air conditioning
- Parquet floor
- Self-catering kitchen
- Living room: bar unit, dining table and chair set, sitting area and coffee table, fireplace, massage chair
- First bedroom: 1 french bed, 2 single armchairs and coffee table, writing desk
- Second bedroom: 2 single beds, single armchair and writing desk
- Third bedroom: 2 single beds, single armchair and writing desk
- Fourth bedroom: 2 single beds, single armchair and writing desk
- Wardrobe
- Curtains
- Full-length mirror
- Suitcase rack
- Private terrace (150 m²)
- Whirlpool on the terrace
- Outdoor fireplace on the terrace
- Terrace sitting group with coffee table, table
- Laundry drying rack on the terrace
- Private outdoor pool (fresh water, sea water and heating options, 140 cm deep, 100 m²)
- Hammock and sunbeds by the pool
- Private car parking

BED

- Upstairs:
 - 1st bedroom: 1 french bed (200x200)
 - 2nd bedroom: 2 single beds (90x200)
 - 3rd bedroom: 2 single beds (120x200)
- Ground floor:
 - 4th bedroom: 2 single beds (100x200)
- Special manufactured bed
- Pillow menu
- Baby Cot (available on request, 70x110)
- Rollaway ekstra bed (available on request, 80x190)

BATHROOM

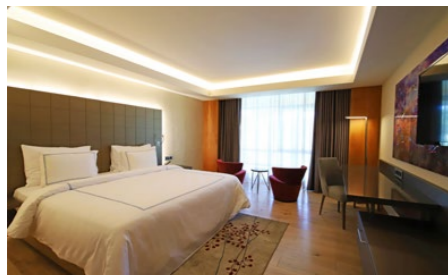
- 4 separate bathrooms and 4 WCs
- Upstairs:
 - 1st bathroom: shower cabin, whirlpool and WC
 - 2nd bathroom: shower cabin, whirlpool and WC
 - 3rd bathroom: shower cabin and WC
- Ground floor:
 - 4th bathroom: shower cabin and WC
- VIP Bvlgari bath and shower products
- Baby bath products (optional)
- Children's bathrobe (optional, 2 - 11.99)
- Bathrobe
- Slippers
- Hair dryer
- Telephone
- Scales

TECHNOLOGY

- 6 LCD TVs
- Massage chair
- Telephone
- Safe deposit box
- High-speed wireless internet access

SERVICES & FACILITIES

- Nespresso capsule coffee machine (with water heating option)
- Organic Herbal tea varieties
- Iron and ironing board
- Daily cleaning
- Daily towel change
- Turndown service
- Minibar (refilled 1 time a day free of charge)
- Laundry services (surcharge, available between 08:00 - 00:00)



KING VILLA

Garden | Duplex | 250 m² | Garden, golf course and private pool view
Maximum number of Person: 8 adults + 2 children (0 - 11.99) | 8 adults



ROOM FEATURES

- 5 rooms: 4 bedrooms & 1 living room
- VRF (individual) air conditioning
- Parquet floor
- Self-catering kitchen
- Living room: bar unit, dining table and chair set, sitting area and coffee table, fireplace, massage chair
- First bedroom: 1 french bed, 2 single armchairs and coffee table, writing desk
- Second bedroom: 2 single beds, single armchair and writing desk
- Third bedroom: 2 single beds, single armchair and writing desk
- Fourth bedroom: 2 single beds, single armchair and writing desk
- Wardrobe
- Curtains
- Full-length mirror
- Suitcase rack
- Private terrace (150 m²)
- Whirlpool on the terrace
- Outdoor fireplace on the terrace
- Terrace sitting group with coffee table, table, and chair set
- Laundry drying rack on the terrace
- Private outdoor pool (fresh water, sea water and heating options, 140 cm deep, 100 m²)
- Hammock and sunbeds by the pool
- Private car parking

BED

- Upstairs:
 - 1st bedroom: 1 french bed (200x200)
 - 2nd bedroom: 2 single beds (90x200)
 - 3rd bedroom: 2 single beds (120x200)
- Ground floor:
 - 4th bedroom: 2 single beds (100x200)
- Special manufactured bed
- Pillow menu
- Baby Cot (available on request, 70x110)
- Rollaway ekstra bed (available on request, 80x190)

BATHROOM

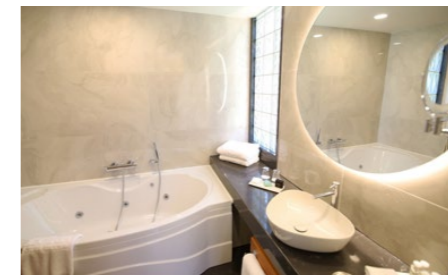
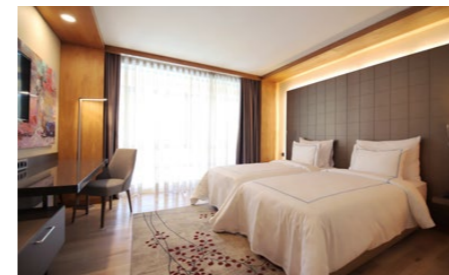
- 4 separate bathrooms and 4 WCs
- Upstairs:
 - 1st bathroom: shower cabin, whirlpool and WC
 - 2nd bathroom: shower cabin, whirlpool and WC
 - 3rd bathroom: shower cabin and WC
- Ground floor:
 - 4th bathroom: shower cabin and WC
- VIP Bvlgari bath and shower products
- Baby bath products (optional)
- Children's bathrobe (optional, 2 - 11.99)
- Bathrobe
- Slippers
- Hair dryer
- Telephone
- Scales

TECHNOLOGY

- 6 LCD TVs
- Massage chair
- Telephone
- Safe deposit box
- High-speed wireless internet access

SERVICES & FACILITIES

- Nespresso capsule coffee machine (with water heating option)
- Organic Herbal tea varieties
- Iron and ironing board
- Daily cleaning
- Daily towel change
- Turndown service
- Minibar (refilled 1 time a day free of charge)
- Laundry services (surcharge, available between 08:00 - 00:00)



VIP VILLA

Garden | Duplex | 400 m² | Garden, golf course and private pool view
Maximum number of Person: 8 adults + 2 children (0 - 11.99) | 8 adults



ROOM FEATURES

- 5 rooms: 4 bedrooms & 1 living room
- Smart pane- controlled room lighting
- Smart panel-controlled curtains
- VRF (individual) air conditioning with smart panel control
- Study room (desk, chair, and coffee table)
- Marble and parquet floor (on the ground floor)
- Parquet floor (upstairs)
- Self-catering kitchen
- SPA area (sauna, steam room, whirlpool, 2 massage beds, treadmill, shower, and WC)
- Living room: bar unit, dining table and chair set, sitting area with sofa and coffee table, decorative fireplace
- First bedroom: 1 french bed, bar corner, vanity table with pouf and mirror, single armchair, lounge chair, dressing area and bathtub
- Second bedroom: 2 single beds, single armchair, and coffee table
- Third bedroom: 2 single beds
- Fourth bedroom: 1 french bed, single armchair, and coffee table
- Wardrobe
- Full-length mirror
- Suitcase rack
- Private terrace (200 m²)
- Terrace sitting group with coffee table, table, and chair set
- Laundry drying rack on the terrace
- Private outdoor pool (fresh water, sea water and heating options, 140 cm deep, 92 m²)
- Hammock and sunbeds by the pool
- Private car parking

BED

- Upstairs:
 - 1st bedroom: 1 french bed (200x200)
 - 2nd bedroom: 2 single beds (140x200)
 - 3rd bedroom: 2 single beds (140x200)
- Ground floor:
 - 4th bedroom: 1 french bed (180x200)
- Special manufactured bed
- Pillow menu
- Baby Cot (available on request, 70x110)
- Rollaway ekstra bed (available on request, 80x190)

BATHROOM

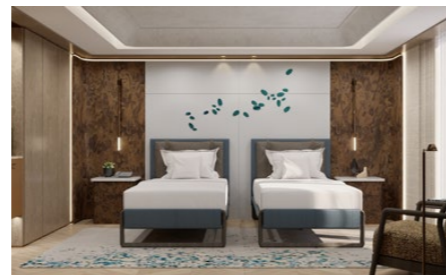
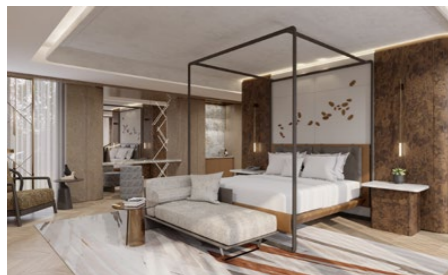
- 5 separate bathrooms and 6 WCs
- Upstairs:
 - 1st bathroom: shower cabin, double washbasin, and WC
 - 2nd bathroom: shower cabin, bath, and WC
 - 3rd bathroom: shower cabin and WC
- Ground floor:
 - 4th bathroom: shower cabin and WC
 - 5th bathroom (SPA area): shower cabin and WC
- Guest washbasin and WC
- VIP Bvlgari bath and shower products
- Baby bath products (optional)
- Children's bathrobe (optional, 2 - 11.99)
- Bathrobe
- Slippers
- Hair dryer
- Telephone
- Scales

TECHNOLOGY

- Smart home control system
- 4 Mirror TVs & 3 LCD TVs
- USB socket
- Elevator
- Telephone
- Safe deposit box
- High-speed wireless internet access

SERVICES & FACILITIES

- Nespresso capsule coffee machine (with water heating option)
- Organic Herbal tea varieties
- Iron and ironing board
- Daily cleaning
- Daily towel change
- Turndown service
- Minibar (refilled 1 time a day free of charge)
- Laundry services (surcharge, available between 08:00 - 00:00)



PRESIDENTIAL VILLA

Garden | Duplex | 1400 m² | Garden, golf course and private pool view
Maximum number of Person: 12 adults + 2 children (0 - 11.99) | 12 adults



ROOM FEATURES

- 7 rooms: 6 bedrooms & 1 living room
- 2 staff bedrooms
- Parquet floor
- Private professional kitchen
- Large working room (meeting table, armchair and coffee table set)
- SPA area (fitness room, Turkish bath, sauna, steam room, whirlpool, massage room, shower, and WC)
- Billiard room
- Cinema hall
- Living room: bar area, dining table and chair set, sitting group with sofa and coffee table
- Dressing room in the master bedroom
- Wardrobe
- Curtains
- VRF (individual) air conditioning
- Full-length mirror
- Suitcase rack
- Large balcony with sun loungers and whirlpool upstairs
- Private terrace (300 m²)
- Terrace sitting group with coffee table, table, and chair set
- Laundry drying rack on the terrace
- Private outdoor pool (fresh water, sea water and heating options, 140 cm deep, 133 m²)
- Hammock and sunbeds by the pool
- Camellia (seating group) by the pool
- Private car parking

BED

- Upstairs:
 - 1st bedroom: 1 french bed (200x200)
 - 2nd bedroom: 1 french bed (160x200)
 - 3rd bedroom: 1 french bed (160x200)
 - 4th bedroom: 2 single beds (100x200)
 - 5th bedroom: 2 single beds (100x200)
 - 6th bedroom: 2 single beds (100x200)
- Special manufactured bed
- Pillow menu
- Baby Cot (available on request, 70x110)
- Rollaway ekstra bed (available on request, 80x190)

BATHROOM

- 7 separate bathrooms and 9 WCs
- Upstairs:
 - 1st bathroom: double washbasin, shower cabin, whirlpool and WC
 - 2nd bathroom: double washbasin, whirlpool and WC
 - 3rd bathroom: double washbasin, shower cabin, whirlpool and WC
 - 4th bathroom: shower cabin and WC
 - 5th bathroom: shower cabin and WC
 - 6th bathroom: shower cabin and WC
 - 7th bathroom (SPA area): shower cabin and WC
- Guest washbasin and WC
- Separate shower and WC in staff bedrooms
- VIP Bvlgari bath and shower products
- Baby bath products (optional)
- Children's bathrobe (optional, 2 - 11.99)

- Bathrobe
- Slippers
- Illuminated make-up mirror
- Hair dryer
- Telephone
- Scales

TECHNOLOGY

- 9 LCD TVs - IP TV
- Elevator
- Telephone
- Safe deposit box
- High-speed wireless internet access

SERVICES & FACILITIES

- Nespresso capsule coffee machine (with water heating option)
- Organic Herbal tea varieties
- Iron and ironing board
- Daily cleaning
- Daily towel change
- Turndown service
- Minibar (refilled 1 time a day free of charge)
- Laundry services (extra charge, available between 08:00 - 00:00)



ROOM OVERVIEW

Room Type	Location	Landscape	Maximum number of people	Number of rooms	Bed-room	Living room	Bed	Shower + bathtub	Number of WCs	Room dimensions	Total
Superior Room	Main building	Garden or pool view	2 adults + 2 children (0 - 11.99), 3 adults	1	1	-	1 french bed (180x200) or 2 single beds (120x200)	1 shower	1	39 m ²	199
Superior Laguna Room	Main building, ground floor	Pool view (direct access to the communal pool)	2 adults + 2 children (0 - 11.99), 3 adults	1	1	-	1 french bed (180x200) or 2 single beds (120x200)	1 shower	1	39 m ²	51
Suite	Main building	Garden or pool view	2 adults + 2 children (0 - 11.99), 3 adults + 1 child (0 - 11.99)	2	1	1	1 french bed (180x200)	1 shower	2	65 m ²	18
King Suite	Main building	Sea and garden view	4 adults + 2 children (0 - 11.99), 5 adults	3	2	1	1 french bed (180x200) & 2 single beds (120x200)	3 showers & 1 bath	3	160 m ²	2
Garden Villa	Garden	Garden view	4 adults + 2 children (0 - 11.99), 5 adults	3	2	1	1 french bed (200x200) & 2 single beds (120x200)	2 showers	2	86 m ²	52
Pool Villa	Garden	View of the communal pool	4 adults + 2 children (0 - 11.99), 5 adults	3	2	1	1 french bed (200x200) & 2 single beds (120x200)	2 showers	2	86 m ²	30
Deluxe Villa	Garden	Garden, golf course and private pool	6 adults + 2 children (0 - 11.99), 7 adults	4	3	1	1 french bed (180x210) & 2 single beds (120x210) & 2 single beds (110x210)	4 showers & 1 bath	4	200 m ²	10
Serenity Villa	Garden	Garden, golf course and private pool	6 adults + 2 children (0 - 11.99), 7 adults	4	3	1	1 french bed (200x200) & 2 french beds (160x200) & 2 single beds (100x200)	3 showers & 2 whirlpool	3	200 m ²	1
Queen Villa	Garden	Garden, golf course and private pool	8 adults + 2 children (0 - 11.99), 8 adults	5	4	1	1 french bed (200x200) & 2 single beds (90x200) & 2 single beds (120x200) & 2 single beds (100x200)	4 showers & 2 whirlpool	4	250 m ²	1
King Villa	Garden	Garden, golf course and private pool	8 adults + 2 children (0 - 11.99), 8 adults	5	4	1	1 french bed (200x200) & 2 single beds (90x200) & 2 single beds (120x200) & 2 single beds (100x200)	4 showers & 2 whirlpool	4	250 m ²	1
Vip Villa	Garden	Garden, golf course and private pool	8 adults + 2 children (0 - 11.99), 8 adults	5	4	1	1 french bed (200x200) & 4 single beds (140x200) & 1 french bed (180x200)	5 showers & 1 bath	6	400 m ²	1
Presidential Villa	Garden	Garden, golf course and private pool	12 adults + 1 child (0 - 11.99), 12 adults	7	6	1	1 french bed (200x200) & 2 single beds (160x200) & 6 single beds (100x200)	6 showers & 3 whirlpool	9	1400 m ²	1

VIP CONCEPT & PRIVILEGED SERVICES



All King Suite, Villa, Platinum Card guests benefit from a special VIP concept.

VIP concept: Enjoy the food and beverage services (except A la Carte Restaurants) in our other hotels free of charge.

For guests who wish to book the VIP Concept: All F&B services at the Gloria Serenity Resort, Gloria Golf Resort and Gloria Verde Resort (except the à la carte restaurants in the evening) can be used as part of the concept at free of charge. There is a daily charge per person for the VIP concept. It is possible to book the service for the entire stay or for single days.

Regardless of the room category, a special Long Stay concept is offered for guests staying 28 nights or more.

LONG STAY CONCEPT PRIVILEGES:

- VIP concept
- 24/7 free room service (from the menu)
- 50% discounted laundry service

	Gloria Serenity Resort A la carte Restaurant (except Teppanyaki A la carte Restaurant)	Gloria Golf Resort & Gloria Verde Resort Main Restaurant, Snack Restaurant, Bar usage	Gloria Golf Resort & Gloria Verde Resort A la carte Restaurant	24/7 room service (from the menu)	50% discounted laundry service
Garden Villa	-	✓	-	-	-
Pool Villa	-	✓	-	-	-
King Suite	✓	✓	✓	✓	✓
Deluxe Villa	✓	✓	✓	✓	✓
Serenity Villa	✓	✓	✓	✓	✓
Queen Villa	✓	✓	✓	✓	✓
King Villa	✓	✓	✓	✓	✓
VIP Villa	✓	✓	✓	✓	✓
Presidential Villa	✓	✓	✓	✓	✓
Platinum Card holders	✓	✓	✓	✓	-
Long Stay	✓	✓	✓	✓	✓
Paid VIP concept use	-	✓	-	-	-

SPECIAL ROOM TYPES PRIVILEGED SERVICES



GLORIA SERENITY RESORT SPECIAL ROOM TYPES PRIVILEGES	GARDEN VILLA	POOL VILLA	KING SUITE	DELUXE VILLA	SERENITY VILLA	QUEEN VILLA	KING VILLA	VIP VILLA	PRESIDENTIAL VILLA
Glorian Guest Service Agent service	✓	✓	✓	✓	✓	✓	✓	✓	✓
Private butler	•	•	•	✓	✓	✓	✓	✓	✓
Private maid	•	•	•	•	✓	✓	✓	✓	✓
Private chef	•	•	•	•	•	•	•	✓	✓
Laundry service	•	•	*	*	*	*	*	*	*
Buggy	•	•	•	✓	✓	✓	✓	✓	✓
Pavilion (summer season)	•	•	✓	✓	✓	✓	✓	✓	✓
3 hotel all-inclusive usage (excluding A la carte restaurants)	✓	✓	✓	✓	✓	✓	✓	✓	✓
3 hotel A la Carte restaurant usage	•	•	✓**	✓**	✓**	✓**	✓**	✓**	✓**
24-hour room service (from the menu)	•	•	✓	✓	✓	✓	✓	✓	✓
Special welcome set-up	✓	✓	✓	✓	✓	✓	✓	✓	✓
VIP Bvlgari cosmetics	•	•	•	✓	✓	✓	✓	✓	✓
Wireless internet	✓	✓	✓	✓	✓	✓	✓	✓	✓
High speed wireless internet	•	•	✓	✓	✓	✓	✓	✓	✓
Private transfer airport - hotel - airport	•	•	✓	✓	✓	✓	✓	✓	✓
Airport Fast Track service	•	•	✓	✓	✓	✓	✓	✓	✓
Special breakfast & lunch Route 66 Restaurant (summer season)	✓	✓	✓	✓	✓	✓	✓	✓	✓

* 50% discount | • Additional charges apply | ✓ Free of charge

**Gloria Serenity Resort King Suite, Deluxe Villa, Serenity Villa, Queen Villa, King Villa, VIP Villa and Presidential Villa guests are given the possibility to use all A la carte restaurants once a week each for free of charge except Teppanyaki Restaurant. Teppanyaki Restaurant is subject to charge for all guests.

FOOD AND BEVERAGE SERVICES

Restaurant	Concept	Menu	Working hours		Location	Details	Gloria All Inclusive
			Summer season	Winter season			
Tetrasomia Main Restaurant	International	buffet	Breakfast: 07:00 - 10:30 Lunch 12:30 - 14:30 Dinner 19:00 - 21:30	Breakfast: 07:00 - 10:30 Lunch 12:30 - 14:30 Dinner 18:30 - 21:00	Main building (covered dining area & terrace)	✓ Detoxifying fresh fruit juices for breakfast ✓ Ice cream service at lunch and dinner ✓ "HIPP" products station ✓ Gluten-free, lactose-free, vegan and diet menu options available	✓
Estela A La carte Restaurant	International	A la carte	7 / 24	7 / 24	Main building (covered dining area & terrace)	✓ 12:30 - 15:00 sushi service (except wednesday)	✓
River Landing A La Carte Restaurant	Seafood	A la carte	19:00 - 23:00	Closed	Outdoor (outdoor dining area)	✓ Subject to a fee ✓ Winter season closed	
Kül A La Carte Restaurant	Traditional Anatolian cuisine & BBQ	A la carte	19:00 - 23:00	19:00 - 23:00	Main building (indoor dining area)	✓ Subject to a fee ✓ Winter season free of charge	
Le Jardin Au Printemps A La Carte Restaurant	French cuisine	A la carte	19:00 - 23:00	19:00 - 23:00	Main building (covered dining area)	✓ Subject to a fee ✓ Winter season free of charge	
La Trattoria Romana A La Carte Restaurant	Italian cuisine	A la carte	19:00 - 23:00	Closed	Outdoor (outdoor dining area)	✓ Subject to a fee ✓ Winter season closed	
Fuego Steak House A La Carte Restaurant	Steak House	A la carte	19:00 - 23:00	19:00 - 23:00	Main building (covered dining area & terrace)	✓ Subject to a fee	
Chef A La Carte Restaurant	International and local chef cuisine	A la carte	19:00 - 23:00	19:00 - 23:00	Main building (indoor dining area)	✓ Subject to a fee	
AKA & Teppanyaki A La Carte Restaurant	Japanese cuisine	A la carte	19:00 - 23:00	19:00 - 23:00	Main building (covered dining area & terrace)	✓ Subject to a fee	
La Trattoria Romana Snack Restaurant	Italian cuisine	A la carte	12:00 - 16:00	Closed	Outdoor	✓ Ice cream service 12:00 - 17:00	✓
Traces Beach Snack Restaurant	International	A la carte	12:00 - 18:00	Closed	By the beach	✓ Ice cream service 11:00 - 16:00	✓
Route 66 Snack Restaurant	International	A la carte	08:00 - 16:00	Closed	Villas area, by the pool, outdoor area	✓ Special breakfast and lunch service for King Suite and Villa guests between ✓ Ice cream service 12:30-16:00	
Scoop	Handmade ice cream	Showcase	12:00 - 23:00	12:00 - 23:00	Main building		✓
Chocolatier	Handmade chocolate	Showcase	12:00 - 23:00	12:00 - 23:00	Main building		✓
Bon Vivant	Patisserie	A la carte	11:00 - 23:00	10:30 - 23:00	Main building		✓
Pavilion	Private food & beverage service on the beach	A la carte	09:00 - 18:00	Closed	On the beach, special for pavilion guests	✓ Subject to a fee ✓ Butler service ✓ 09:00 - 18:00 beverage service ✓ 12:00 - 18:00 food service	
Room service	Special menu	A la carte	24 hours paid *	24 hours paid *	Room service		
What-When-Where Service	Children's menu	A la carte	24 hours	24 hours		✓ Free of charge for the age range 00 - 03,99 years ✓ Requests must be notified to guest relations in advance	✓

* Room Service is free of charge for guests staying in King Suite, Deluxe Villa, Serenity Villa, Queen Villa, King Villa, VIP Villa, and Presidential Villa and is available for all other guests for a subcharge.
• Route 66 Restaurant (special breakfast and lunch) is free of charge for King Suite, Villa guests and guests staying as VIP concept and available for all other guests for a subcharge.
• Food and beverages consumed in our other hotels will be charged at a 50% discount.
• Use of the à la carte restaurants at the Gloria Golf Resort & Gloria Verde Resort is

charged per person, regardless of the room category.
• Guests staying in the Gloria Serenity Resort King Suite, Deluxe Villa, Serenity Villa, Queen Villa, King Villa, VIP Villa and Presidential Villa are entitled to use all A la carte restaurants once a week each free of charge at Gloria Hotels & Resorts except Teppanyaki Restaurant.
• Platinum Card holders and Long Stay guests can use all A la carte restaurants once a week each free of charge at Gloria Hotels & Resorts except Teppanyaki Restaurant.
• A la carte restaurant service days may vary depending on the intensity of operation.

BARS

Bar	Concept	Menu	Working hours		Location	Details	Gloria All Inclusive
			Summer season	Winter season			
Ella Fitzgerald Lobby Bar	Lobby Bar & Lounge	Alcoholic & non-alcoholic & hot drinks & fresh juices	24 hours	24 hours	Main building, ground floor	✓ "Barista" coffee station	✓
Charlie Parker Lobby Bar	Lobby Bar & Lounge	Alcoholic & non-alcoholic & hot drinks & fresh juices	24 hours	24 hours	Main building, upper floor	✓ "Barista" coffee station	✓
Scarlet	Wine Cellar	World wine varieties	16:00 - 00:00	16:00 - 00:00	Main building, upper floor	✓ Subject to a fee	
Polo Bar	Bar	Alcoholic & non-alcoholic & hot drinks	19:00 - 00:00	19:00 - 00:00	Main building, ground floor		✓
La Trattoria Romana Bar	Bar	Alcoholic & non-alcoholic & hot drinks & fresh juices	10:00 - 22:00	Closed	In the garden	✓ Ice cream service 12:00 - 17:00	✓
Route 66 Bar	Bar	Alcoholic & non-alcoholic & hot drinks & fresh juices	08:00 - 20:00	Closed	Villas area, by the pool, outdoor area	✓ Ice cream service 12:30 - 16:00	✓
Traces Beach Bar	Beach Bar	Alcoholic & non-alcoholic & hot drinks & fresh juices	09:00 - 19:00	Closed	By the beach, open area	✓ Ice cream service 11:00 - 16:00	✓
Dock's Pier Bar	Pier Bar	Alcoholic & non-alcoholic & hot drinks & fresh juices	09:00 - 19:00	Closed	On the pier, open space		✓
Olivium Pool Bar	Pool Bar	Alcoholic & non-alcoholic & hot drinks & fresh juices	09:00 - 20:00	09:00 - 17:00	Outdoor area by the heated pool	✓ Common use of GHR	✓
Relax Vitamin Bar	Detox Bar	Detox drinks	09:00 - 20:00	09:00 - 20:00	Main building, SPA centre, indoor area		✓
Wurlitzer Karaoke Bar	Karaoke Bar	Alcoholic & non-alcoholic & hot drinks & fresh juices	16:00 - 00:00	16:00 - 00:00	Game center, indoor	✓ Common use of GHR	✓
Insomnia Disco Bar	Disco Bar	Alcoholic & non-alcoholic & hot drinks & fresh juices	23:00 - 03:00	23:00 - 02:00 Only on Saturday	Game Center, indoor	✓ Common use of GHR	✓
Arena Bar	Amphitheatre Bar	Alcoholic & soft drinks	Provides service during the activity	Closed	Amphitheatre	✓ Common use of GHR	✓
G-Venture Bar	Concert & Party Bar	Alcoholic & non-alcoholic & hot drinks & fresh juices	Provides service during the activity	Closed	Beach concert area	✓ Common use of GHR	✓
G-Venture Private Lodges	Concert & Party Bar	Alcoholic & non-alcoholic & hot drinks & fresh juices	Provides service during the activity	Closed	Beach concert area	✓ Subject to a fee	
Mini Bar	Room service	Alcoholic & soft drinks, tea, coffee, biscuits, chocolate, crispy apples, confectionery, crisps	During the stay	During the stay	in room	✓ Refilled once a day	✓

POOLS AND BEACH



FEATURES

- Blue flag awarded
- 400 m long and clean sand-pebble beach
- Comfortable sunbeds
- Pier
- Opening and closing dates and times of beaches and pools may vary according to weather conditions

FACILITIES

- Snack restaurant
- Beach Bar
- Pier Bar
- Beach pavilions (surcharge)

BEACH ACTIVITIES AND SERVICES

- Beach volleyball
- Beverage service to sunbeds (soft drinks are served periodically between 10:00 - 18:00)
- Beach towel service
- Security
- Lifeguard

PAID SERVICES

- Water sports activities (08:00 - 20:00)
- Daily pavilion use (09:00 - 18:00)
- SPA treatment area

PAVILION DETAILS:

- Working hours (09:00 - 18:00)
- Shared butler service
- Special service for all pavilion guests
- 12:00 - 18:00 snack from the menu
- Beverage menu with hotel concept
- Mini bar, capsule coffee machine
- Towel
- Waiter call button

GLORIA SERENITY RESORT POOLS	STATE OF USE	OPEN	CLOSED	SEA WATER	SWEET WATER	DEPTH	AREA	SUMMER SEASON	WINTER SEASON	HEATED
Main Pool 1 (in front of the main building)	Communal area	✓		✓		140 cm-200 cm	3621 m ²	08:00-20:00	Closed	
Main Pool 2 (Pool Villa area)	Communal area	✓			✓	140 cm-200 cm	4070 m ²	08:00-20:00	Closed	
Child Pool	Communal area	✓			✓	48 cm	65 m ²	08:00-20:00	Closed	
Olivium Pool	Communal area	✓			✓	140 cm	500 m ²	08:00-20:00	08:00-20:00	✓
Olivium Children Pool	Communal area	✓			✓	50 cm	25 m ²	08:00-20:00	08:00-20:00	✓
Indoor pool (in the SPA centre)	Communal area		✓		✓	140 cm	273 m ²	08:00-20:00	08:00-20:00	✓
Indoor Children's Pool (in the SPA centre)	Communal area		✓		✓	44 cm	11 m ²	08:00-20:00	08:00-20:00	✓
Deluxe Villa Pool	Private	✓		✓	✓	140 cm	52 m ²			✓
Serenity Villa Pool	Private	✓		✓	✓	140 cm	94 m ²			✓
Queen Villa Pool	Private	✓		✓	✓	140 cm	100 m ²			✓
King Villa Pool	Private	✓		✓	✓	140 cm	100 m ²			✓
VIP Villa Pool	Private	✓		✓	✓	140 cm	92 m ²			✓
Presidential Villa Pool	Private	✓		✓	✓	140 cm	133 m ²			✓

- Children under 12 years of age should enter the pool under the supervision of their parents.
- Smoking is prohibited around the children's pool area.
- Sunbeds and towels are free of charge.

SERENITY SPA

An ambiance with the unmistakable mark of luxury.
A place of peace and tranquillity.



DETAILS

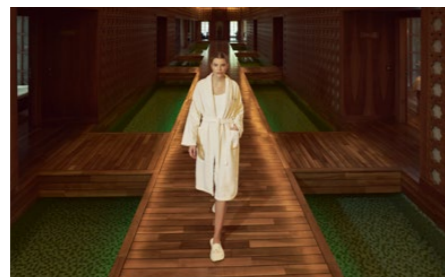
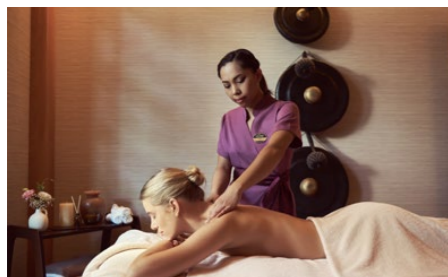
3500 m² area
Located on the ground floor of the main building
It serves between 09:00 - 20:00 every day
Every day between 10:00 - 12:00, our guests under the age of 12 can use the Turkish bath, sauna and relaxation areas accompanied by their parents.
Children between 12 - 16 years of age are allowed to use the Turkish bath, sauna and relaxation areas between 10:00 - 12:00 to ensure the peace and well-being of our guests.

SERVICES

Indoor pool
Indoor children's pool
Rest area
Relax Vitamin Bar
15 therapy rooms
1 private SPA Suite
Skin, face, and body treatments (world-famous brands such as Thermes Marins, Juliette Armand and CACI Ultra...)
Massages and treatments
1 private bath
Hairdresser services
Manicure - pedicure
65° C & 90° C sauna
2 steam rooms
1 Turkish bath
Changing rooms with lockers
SPA Pavilion on the beach (closed in winter)

PAID SERVICES

All massage services
All hammam services
All skin, face, and body care services
Hairdresser services
Manicure - pedicure
SPA cosmetics
SPA Pavilion



MEETINGS, ORGANISATIONS AND WEDDINGS

Meeting rooms and equipment are subject to additional charges.
Please contact our MICE department for special service and price details for meeting groups.

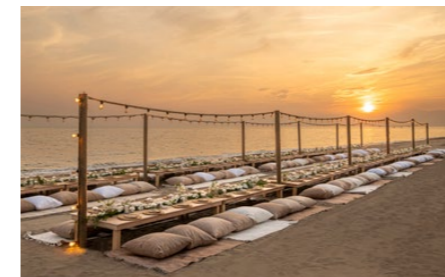


MEETING ROOM	LENGTH	WIDTH	AREA	HEIGHT	BANKET	U TABLE	THEATRE	CLASS
Faces I-II-III	24 m	10,5 m	251 m ²	3,8 m	70 Person	-	160 Person	80 Person
Faces I (daylight)	6,5 m	10,5 m	68 m ²	3,8 m	30 Person	14 Person	45 Person	27 Person
Faces II (daylight)	11 m	10,5 m	115 m ²	3,8 m	48 Person	24 Person	65 Person	30 Person
Faces III (daylight)	6,5 m	10,5 m	68 m ²	3,8 m	30 Person	20 Person	45 Person	24 Person

As Gloria Hotels & Resorts, we would like to share your happiness as you set sail for the new beginning in your life.

Gloria Hotels & Resorts has an experienced cuisine with all kinds of flavours and an efficient team to make your wedding unforgettable. All you need to do is say 'YES'. Gloria Hotels & Resorts will take care of all the details...

At Gloria Hotels & Resorts we want to thank you for the trust you have put in us - and we promise to support you in all your special celebrations.



GLORIA SERENITY RESORT - MAP



GLORIA SERENITY RESORT - MAP

ROOMS

- A. Main Building
- B. Pool Villas
- C. Garden Villas
- D. Deluxe Villas
- E. VIP Villa
- F. Presidential Villa
- J. Serenity Villa
- K. Queen Villa
- L. King Villa

FOOD & BEVERAGE

- 1. Traces Beach Snack
- 2. Dock's Pier Bar
- 3. River Landing À la Carte
- 4. La Trattoria Romana
Italian Snack Restaurant
- 5. Route 66 Snack Restaurant

BEACH & POOL

- 6. Beach Pavilions
- 7. Towel Desk
- 8. Olivium Pool
(Heated in winter time)

ACTIVITIES

- 9. Fit Gloria
- 10. Tennis Courts
- 11. Arena & Entertainment Center,
Insomnia Night Club
- 12. G-Venture
- 13. Wellness Area & Art Studio
- 14. Water Sports
- 15. Golf Course
- 16. Gloria Mini Farm

GROUND FLOOR LOBBY OUTLETS

- Reception
- Guest Relations / Concierge
- Tetrasomia Main Restaurant
- Ella Fitzgerald Lobby Bar
- Le Jardin Au Printemps À la Carte
- Polo Bar
- Aka À la Carte
- Shopping Area
- Doctor Office
- Serenity SPA & Indoor Pool
- Gloria Shop
- Meeting Rooms

FIRST FLOOR LOBBY OUTLETS

- Charlie Parker Lobby Bar
- Estela - 24/7 À la Carte Restaurant
Sushi Corner
- Fuego À la Carte
- Kül À la Carte
- Chef À la Carte
- Bon Vivant Patisserie
- Chocolatier
- Scoop - Ice Cream
- Gogi Mini
- Wine Cellar
- Locker Rooms



GLORIA GOLF RESORT

Beyond Expectations

The private beach, warm sand and endless sea flowers in a glowing universe of colours, welcome to a magnificent, elegant world!



GENERAL INFORMATION

Gloria Golf Resort opening date: 1997
 Category: 5* Hotel
 Company: Özaltın Holding
 Season: Full Year
 Gloria Hotels & Resorts total area: 2.400.000 m²
 Gloria Golf Resort area: 190.000 m²
 Address: Belek Mah. Turizm Cad. No:74 Serik – Antalya / Türkiye
 Telephone: +90 242 710 06 00
 E-mail: info@gloria.com.tr
 Website: www.gloria.com.tr
 WI-FI: Rooms and public areas (free of charge)
 High-speed internet in rooms and public areas (surcharge)
 Credit cards: Visa, Mastercard, Amex
 Languages Spoken: Turkish, English, Russian, German
 To download current pictures, videos, and factsheets: stock.gloria.com.tr

ACCOMMODATION

The hotel has a main building with 4 floors and 2 wings, and a total of 5 lifts serving each floor. In the garden, there are Family Suites consisting of 3 floors and 2 wings, Standard Rooms, Junior Suites and Villas consisting of 2 floors and 8 wings.

ACCOMMODATION POLICY

Pets not allowed
 Hotel check-in time: 06:00
 Hotel check-out time: 19:00
 Room check-in time: 14:00
 Room check-out time: 12:00
 Early check-in and late check-out policy: Early check-in or late check-out is subject to a charge according to availability. Subject to availability, early check-in before 8 or late check-out after 18:00 is charged at 100% of the daily room rate.
 Smoking: The use of tobacco products and electronic cigarettes is not permitted indoors.
 Age limit policy: Guests under 18 years of age are not accommodated without a parent.
 Visitor policy: The admission of visitors to the hotel is subject to a fee. Visitors are required to present their passport or identity card upon arrival. Visitors are not permitted in guest rooms.
 Transfer between hotels: Guests are provided with free shuttle service between Gloria Hotels.

LOCATION & TRANSPORT

Antalya Airport: 40 km
 Gazipasa Airport: 148 km
 Antalya City Centre: 50 km
 Nearest Residential Centre: 7 km (Belek)
 Beach: Private sand/gravel beach and 1 pier
 Gloria Golf Club: 1,5 km

ROOM DETAILS

Total Rooms: 515
 Standard Rooms: 295
 Suites: 174
 Villas: 46
 Bed Capacity: 1276
 Floor Plan: 62 Garden Standard Rooms + 2 Disabled Rooms, 227 Main Building Standard Rooms + 4 Disabled Rooms, 48 Garden Junior Suite, 31 Main Building Junior Suite, 22 Suite, 72 Family Suites, 1 King Suite, 24 Gloria Villas, 18 Executive Villas, 4 Owner Villas

GARDEN STANDARD ROOM

Garden | 24 m² | Garden view
Maximum number of Person: 2 adults + 2 children (0 - 11.99) | 3 adults



ROOM FEATURES

- 1 room
- Parquet floor
- Sofa (in rooms with french bed)
- Single Seat (in twin bedded rooms)
- Coffee corner
- Coffee table
- Wardrobe
- Curtains
- Writing desk
- Central air conditioning
- Full-length mirror
- Suitcase rack
- Balcony or terrace
- Chairs and coffee table set on the balcony or terrace
- Laundry drying rack on the balcony or terrace

BED

- 1 french bed (160x200) or 2 single beds (100x200)
- Special manufactured bed
- Pillow menu
- Cot (available on request, 70x110)
- Rollaway ekstra bed (available on request, 80x190)

BATHROOM

- Shower cabin and WC
- Bvlgari bath and shower products
- Chicco baby bath products (optional)
- Children's bathrobe (optional, 2 - 11.99)
- Bathrobe
- Slippers
- Illuminated make-up mirror
- Hair dryer
- Telephone
- Scales

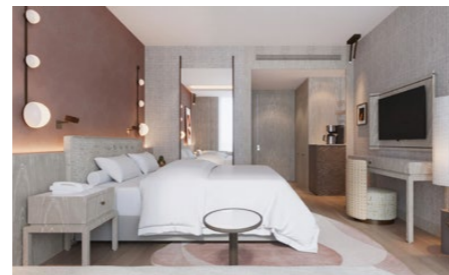
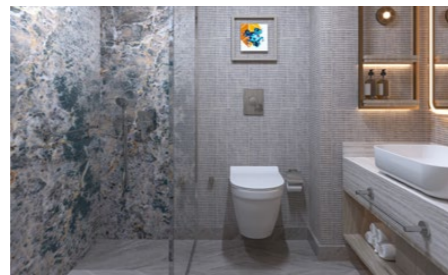
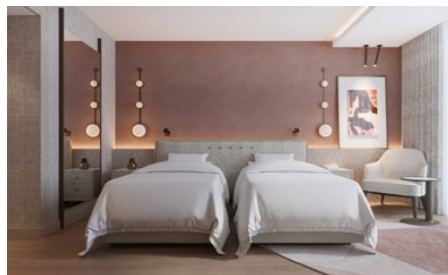
TECHNOLOGY

- LED TV - IP TV
- Telephone
- Safe box
- Wireless internet access

SERVICES & FACILITIES

- Schiller capsule coffee machine
- Schiller herbal tea varieties
- Kettle
- Daily cleaning
- Linen and towel change every other day
- Minibar (refilled 1 time a day free of charge)
- Laundry services (surcharge, available between 08:00 - 00:00)

*There are 2 Garden Standard rooms that are tailored to the needs of our disabled guests.



MAIN BUILDING STANDARD ROOM

Main Building | 24 m² | Garden or pool view
Maximum number of Person: 2 adults + 2 children (0 - 11.99) | 3 adults



ROOM FEATURES

- 1 room
- Parquet floor
- Sofa (in rooms with french bed)
- Single Seat (in twin bedded rooms)
- Coffee corner
- Coffee table
- Wardrobe
- Curtains
- Writing desk
- Central air conditioning
- Full-length mirror
- Suitcase rack
- Balcony or terrace
- Chairs and coffee table set on the balcony or terrace
- Laundry drying rack on the balcony or terrace

BED

- 1 french bed (160x200) or 2 single beds (100x200)
- Special manufactured bed
- Pillow menu
- Baby Cot (available on request, 70x110)
- Rollaway ekstra bed (available on request, 80x190)

BATHROOM

- Shower cabin and WC
- Bvlgari bath and shower products
- Chicco baby bath products (optional)
- Children's bathrobe (optional, 2 - 11.99)
- Bathrobe
- Slippers
- Illuminated make-up mirror
- Hair dryer
- Telephone
- Scales

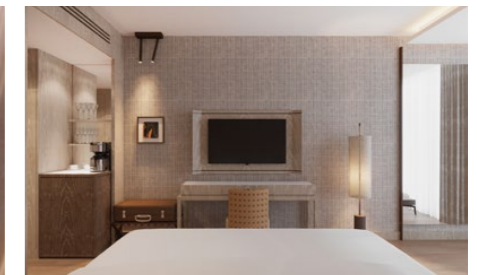
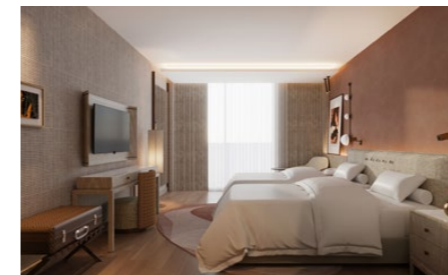
TECHNOLOGY

- LED TV - IP TV
- Telephone
- Safe box
- Wireless internet access

SERVICES & FACILITIES

- Schiller capsule coffee machine
- Schiller herbal tea varieties
- Kettle
- Daily cleaning
- Linen and towel change every other day
- Minibar (refilled 1 time a day free of charge)
- Laundry services (extra charge, available between 08:00 - 00:00)

*There are 4 Main Building Standard rooms that are tailored to the needs of our disabled guests.



JUNIOR SUITE

Main building & Garden | 35 m² | Garden or pool view
Maximum number of Person: 2 adults + 2 children (0 - 11.99) | 3 adults



ROOM FEATURES

- 1 room
- Parquet floor
- Sitting area, pouffe and coffee table
- Writing desk
- Coffee corner
- Wardrobe
- Curtains
- Central air conditioning
- Full-length mirror
- Suitcase rack
- Balcony or terrace
- Chairs and coffee table set on the balcony or terrace
- Laundry drying rack on the balcony or terrace

BED

- 1 french bed (180x200)
- Special manufactured bed
- Pillow menu
- Baby Cot (available on request, 70x110)
- Rollaway ekstra bed (available on request, 80x190)

BATHROOM

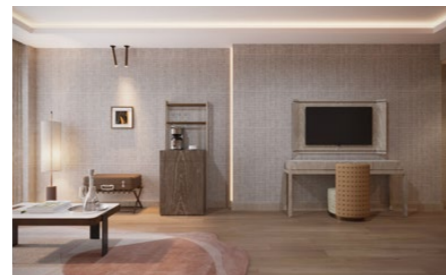
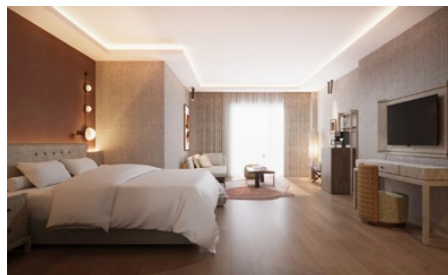
- Shower cabin and WC
- Bvlgari bath and shower products
- Chicco baby bath products (optional)
- Children's bathrobe (optional, 2 - 11.99)
- Bathrobe
- Slippers
- Illuminated make-up mirror
- Hair dryer
- Telephone
- Scales

TECHNOLOGY

- LED TV - IP TV
- Telephone
- Safe deposit box
- Wireless internet access

SERVICES & FACILITIES

- Schiller capsule coffee machine
- Schiller herbal tea varieties
- Kettle
- Daily cleaning
- Linen and towel change every other day
- Minibar (refilled 1 time a day free of charge)
- Laundry services (surcharge, available between 08:00 - 00:00)



SUITE

Main building | 42 m² | Garden view
Maximum number of Person: 2 adults + 2 children (0 - 11.99) | 3 adults + 1 child (0 - 11.99)



ROOM FEATURES

- 2 rooms: 1 bedroom & 1 living room
- Parquet floor
- Sitting area, single armchair, pouf and coffee table
- Writing desk
- Wardrobe
- Curtains
- Central air conditioning
- Full-length mirror
- Suitcase rack
- Balcony or terrace
- Chairs and coffee table set on the balcony or terrace
- Laundry drying rack on the balcony or terrace

BED

- 1 french bed (180x200)
- Special manufactured bed
- Pillow menu
- Baby Cot (available on request, 70x110)
- Rollaway ekstra bed (available on request, 80x190)

BATHROOM

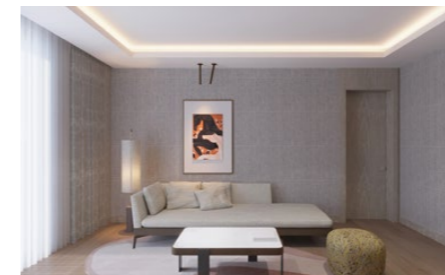
- Shower cabin and WC
- Bvlgari bath and shower products
- Chicco baby bath products (optional)
- Children's bathrobe (optional, 2 - 11.99)
- Bathrobe
- Slippers
- Illuminated make-up mirror
- Hair dryer
- Telephone
- Scales

TECHNOLOGY

- 2 LED TV - IP TV
- Telephone
- Safe box
- Wireless internet access

SERVICES & FACILITIES

- Schiller capsule coffee machine
- Schiller herbal tea varieties
- Kettle
- Daily cleaning
- Linen and towel change every other day
- Minibar (refilled 1 time a day free of charge)
- Laundry services (extra charge, available between 08:00 - 00:00)



FAMILY SUITE

Garden building | 60 m² | Garden or pool view
Maximum number of Person: 4 adults + 1 child (0 - 11.99) | 4 adults



ROOM FEATURES

- 2 rooms: 2 bedrooms
- Parquet floor
- First bedroom: 1 french bed, sitting area, single armchair, and coffee table, writing desk
- Second bedroom: 2 single beds and a writing desk
- Wardrobe
- Curtains
- Central air conditioning
- Full-length mirror
- Suitcase rack
- Balcony or terrace
- Chairs and coffee table set on the balcony or terrace
- Laundry drying rack on the balcony or terrace
- Shared pool

BED

- First bedroom: 1 french bed (180x200)
- Second bedroom: 2 single beds (100x200)
- Special manufactured bed
- Pillow menu
- Baby Cot (available on request, 70x110)
- Rollaway ekstra bed (available on request, 80x190)

BATHROOM

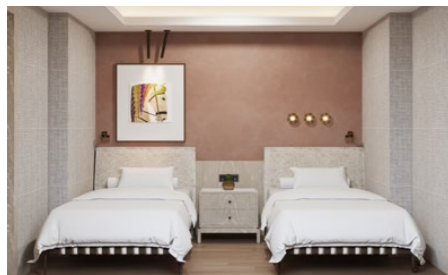
- 2 separate bathrooms and WC
- First bathroom: shower cabin and WC
- Second bathroom: shower cabin and WC
- Bvlgari bath and shower products
- Chicco baby bath products (optional)
- Children's bathrobe (optional, 2 - 11.99)
- Bathrobe
- Slippers
- Illuminated make-up mirror
- Hair dryer
- Telephone
- Scales

TECHNOLOGY

- 2 LED TV - IP TV
- Telephone
- Safe box
- Wireless internet access

SERVICES & FACILITIES

- Schiller capsule coffee machine
- Schiller herbal tea varieties
- Kettle
- Daily cleaning
- Linen and towel change every other day
- Minibar (refilled 1 time a day free of charge)
- Laundry services (extra charge, available between 08:00 - 00:00)



KING SUITE

Main Building | 150 m² | Sea side garden view
Maximum number of Person: 4 adults + 2 children (0 - 11.99) | 5 adults



ROOM FEATURES

- 3 rooms: 2 bedrooms & 1 living room
- Parquet floor
- Living room: 2 sofas, 1 armchair, 1 single armchair, sitting area with pouffe and coffee table, dining table and chairs
- First bedroom: 1 french bed, sitting group with sofa, single armchair and coffee table, writing desk
- Second bedroom: 2 single beds, single armchair, coffee table and writing desk
- Coffee corner
- Wardrobe
- Tulle and background curtains
- Central air conditioning
- Full-length mirror
- Suitcase rack
- Balcony
- Set of chairs and coffee table on the balcony
- Laundry drying rack on the balcony

BED

- First bedroom: 1 french bed (200x200)
- Second bedroom: 2 single beds (100x200)
- Special manufactured bed
- Pillow menu
- Baby Cot (available on request, 70x110)
- Rollaway ekstra bed (available on request, 80x190)

BATHROOM

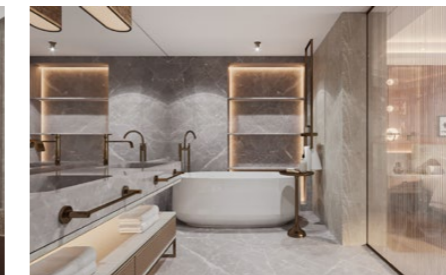
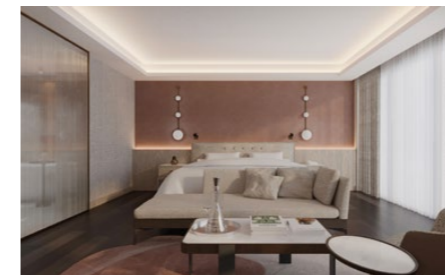
- 2 separate bathrooms and 3 WCs
- First bathroom: double washbasin, shower cabin, bathtub, and WC
- Second bathroom: shower cabin and WC
- Guest washbasin and WC
- VIP Bvlgari bath and shower products
- Chicco baby bath products (optional)
- Children's bathrobe (optional, 2 - 11.99)
- Bathrobe
- Slippers
- Hair dryer
- Telephone
- Scales

TECHNOLOGY

- 3 LED TV - IP TV
- Telephone
- Safe box
- High-speed wireless internet access

SERVICES & FACILITIES

- Schiller capsule coffee machine
- Schiller herbal tea varieties
- Kettle
- Iron and ironing board
- Daily cleaning
- Linen and towel change every other day
- Turndown service
- Minibar (refilled 1 time a day free of charge)
- Laundry services (extra charge, available between 08:00 - 00:00)



GLORIA VILLA

Garden | Two-storey building (lower or upper floor) | 70 m² | Garden view
Maximum number of Person: 4 adults + 2 children (0 - 11.99) | 5 adults



ROOM FEATURES

- 3 rooms: 2 bedrooms & 1 living room
- Parquet floor
- Living room: tea and coffee corner, dining table and chairs, corner set with coffee table
- First bedroom: 1 french bed and writing desk
- Second bedroom: 2 single beds
- Wardrobe
- Curtains
- Central air conditioning
- Full-length mirror
- Suitcase rack
- Balcony or terrace
- Table and chair set on the balcony or terrace
- Laundry drying rack on the balcony or terrace
- Sunbed on the balcony or terrace

BED

- First bedroom: 1 french bed (180x200)
- Second bedroom: 2 single beds (100x200)
- Special manufactured bed
- Pillow menu
- Baby Cot (available on request, 70x110)
- Rollaway ekstra bed (available on request, 80x190)

BATHROOM

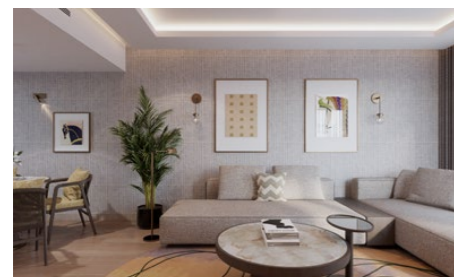
- 2 separate bathrooms and 2 WCs
- First bathroom: shower cabin and WC
- Second bathroom: shower cabin and WC
- VIP Bvlgari bath and shower products
- Chicco baby bath products (optional)
- Children's bathrobe (optional, 2 - 11.99)
- Bathrobe
- Slippers
- Illuminated make-up mirror
- Hair dryer
- Telephone
- Scales

TECHNOLOGY

- 1 mirror TV and 2 LED TVs - IP TV
- Telephone
- Safe box
- Wireless internet access

SERVICES & FACILITIES

- Schiller capsule coffee machine
- Schiller herbal tea varieties
- Kettle
- Iron and ironing board
- Daily cleaning
- Linen and towel change every other day
- Turndown service
- Minibar (refilled 1 time a day free of charge)
- Laundry services (extra charge, available between 08:00 - 00:00)



EXECUTIVE VILLA

Garden | Single Storey | 80 m² | Garden view
Maximum number of Person: 4 adults + 2 children (0 - 11.99) | 5 adults



ROOM FEATURES

- 3 rooms: 2 bedrooms & 1 living room
- Parquet floor
- Living room: tea and coffee corner, dining table and chairs, corner set with pouf and coffee table
- First bedroom: 1 french bed and writing desk
- Second bedroom: 2 single beds and a writing desk
- Wardrobe
- Curtains
- Central air conditioning
- Full-length mirror
- Suitcase rack
- Private terrace
- Table and chair set on the terrace
- Sunbeds on the terrace
- Laundry drying rack on the terrace

BED

- First bedroom: 1 french bed (180x200)
- Second bedroom: 2 single beds (100x200)
- Special manufactured bed
- Pillow menu
- Baby Cot (available on request, 70x110)
- Rollaway ekstra bed (available on request, 80x190)

BATHROOM

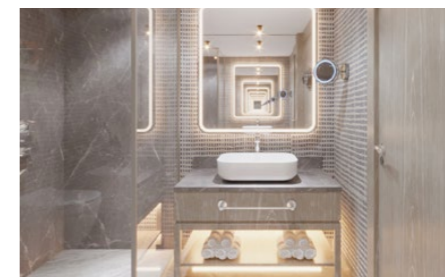
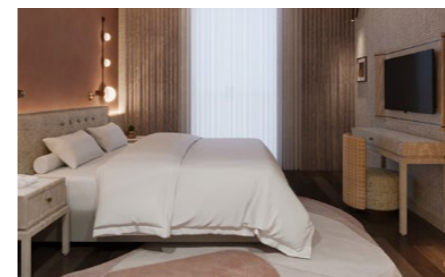
- 2 separate bathrooms and 2 WCs
- First bathroom: shower cabin and WC
- Second bathroom: shower cabin and WC
- VIP Bvlgari bath and shower products
- Chicco baby bath products (optional)
- Children's bathrobe (optional, 2 - 11.99)
- Bathrobe
- Slippers
- Illuminated make-up mirror
- Hair dryer
- Telephone
- Scales

TECHNOLOGY

- 1 mirror TV and 2 LED TVs - IP TV
- Telephone
- Safe box
- Wireless internet access

SERVICES & FACILITIES

- Schiller capsule coffee machine
- Schiller herbal tea varieties
- Kettle
- Iron and ironing board
- Daily cleaning
- Linen and towel change every other day
- Turndown service
- Minibar (refilled 1 time a day free of charge)
- Laundry services (extra charge, available between 08:00 - 00:00)



OWNER VILLA

Garden | Single storey | 190 m² | Garden, river and private pool views
Maximum number of person: 6 adults + 2 children (0 - 11.99) | 7 adults



ROOM FEATURES

- 4 rooms: 3 bedrooms & 1 living room
- Parquet floor (entrance hall and kitchen with marble floor)
- Specially equipped kitchen, table, and chairs
- Living room: dining table and chair set, sitting area with sofa, 2 single armchairs and coffee table
- First bedroom: 1 french bed, lounge chair, single armchair, dressing area, vanity table with armchair and mirror
- Second bedroom: 1 french bed and writing desk
- Third bedroom: 2 single beds, single armchair and writing desk
- Storage room
- Wardrobe
- Full-length mirror
- Suitcase rack
- Private terrace
- Daybed & sunbed
- Table and chair set on the terrace
- Laundry drying rack on the terrace
- Private outdoor pool (with heating option, 140 cm deep, 78 m²)
- Hammock and sunbeds by the pool

BED

- First bedroom: 1 french bed (200x200)
- Second bedroom: 1 french bed (180x200)
- Third bedroom: 2 single beds (100x200)
- Special manufactured bed
- Pillow menu
- Baby Cot (available on request, 70x110)
- Rollaway extra bed (available on request, 80x190)

BATHROOM

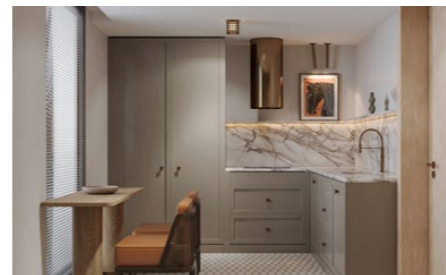
- 3 separate bathrooms and 4 WCs
- 1st bathroom: shower cabin, bathtub, double washbasin, and WC
- 2nd bathroom: shower cabin, double washbasin, and WC
- 3rd bathroom: shower cabin and WC
- Guest washbasin and WC
- VIP Bvlgari bath and shower products
- Chicco baby bath products (optional)
- Children's bathrobe (optional, 2 - 11.99)
- Bathrobe
- Slippers
- Hair dryer
- Telephone
- Scales

TECHNOLOGY

- 3 mirror TVs and 1 LED TV - IP TV
- Telephone
- Safe box
- High-speed wireless internet access

SERVICES & FACILITIES

- Schiller capsule coffee machine
- Schiller herbal tea varieties
- Kettle
- Iron and ironing board
- Washing machine
- Daily cleaning
- Linen and towel change every other day
- Turndown service
- Minibar (refilled 1 time a day free of charge)
- Laundry services (extra charge, available between 08:00 - 00:00)



ROOM OVERVIEW



Room Type	Location	Landscape	Maximum number of people	Number of rooms	Bed-room	Living room	Bed	Shower+ bathtub	WC	Room dimensions	Total
Garden Standard Room	Garden building	Garden view	2 adults + 2 children (0 - 11.99), 3 adults	1	1	-	1 french bed (160 x 200) or 2 single beds (100 x 200)	1 shower	1	24 m ²	64
Main Building Standard Room	Main building	Garden or pool view	2 adults + 2 children (0 - 11.99), 3 adults	1	1	-	1 french bed (160 x 200) or 2 single beds (100 x 200)	1 shower	1	24 m ²	231
Junior Suite	Main building & garden	Garden or pool view	2 adults + 2 children (0 - 11.99), 3 adults	1	1	-	1 french bed (180 x 200)	1 shower	1	35 m ²	79
Suite	Main building	Garden view	2 adults + 2 children (0 - 11.99), 3 adults + 1 child (0 - 11.99)	2	1	1	1 french bed (180 x 200)	1 shower	1	42 m ²	22
Family Suite	Garden building	Garden or pool view	4 adults + 1 child (0 - 11.99)	2	2	-	1 french bed (180 x 200) & 2 single beds (100 x 200)	2 showers	2	60 m ²	72
King Suite	Main building	Seaside, garden view	4 adults + 2 children (0 - 11.99), 5 adults	3	2	1	1 french bed (200 x 200) & 2 single beds (100 x 200)	2 showers & 1 bath	3	150 m ²	1
Gloria Villa	Garden	Garden view	4 adults + 2 children (0 - 11.99), 5 adults	3	2	1	1 french bed (180 x 200) & 2 single beds (100 x 200)	2 showers	2	70 m ²	24
Executive Villa	Garden	Garden view	4 adults + 2 children (0 - 11.99), 5 adults	3	2	1	1 french bed (180 x 200) & 2 single beds (100 x 200)	2 showers	2	80 m ²	18
Owner Villa	Garden	Garden, river and private pool view	6 adults + 2 children (0 - 11.99), 7 adults	4	3	1	1 french bed (200 x 200) & 1 french bed (180 x 200) & 2 single beds (100 x 200)	3 showers & 1 bath	4	190 m ²	4

VIP CONCEPT & PRIVILEGED SERVICES



All King Suite, Villa, Platinum Card, Long Stay guests benefit from a special VIP concept.

VIP concept: Enjoy the food and beverage service (except A la Carte Restaurants) in our other hotels free of charge.

For guests who wish to book the VIP Concept: All F&B services at the Gloria Serenity Resort, Gloria Golf Resort and Gloria Verde Resort (except the à la carte restaurants in the evening) can be used as part of the concept at free of charge. There is a daily charge per person for the VIP concept. It is possible to book the service for the entire stay or for single days.

Regardless of the room category, a special Long Stay concept is offered for guests staying 28 nights or more.

LONG STAY CONCEPT PRIVILEGES:

- VIP concept
- 24/7 free room service (from the menu)
- 50% discounted laundry service

	Gloria Golf Resort A la Carte Restaurant	Gloria Serenity Resort & Gloria Verde Resort Main Restaurant, Snack Restaurant and Bar	Gloria Serenity Resort & Gloria Verde Resort A la Carte Restaurant (except GSR Teppanyaki A la Carte)	24/7 room service (from the menu)	50% discounted laundry service
Gloria Villa	-	✓	-	-	-
Executive Villa	-	✓	-	-	-
King Suite	✓	✓	✓	✓	-
Owner Villa	✓	✓	✓	✓	-
Platinum Card Holders	✓	✓	✓	✓	-
Long Stay	✓	✓	✓	✓	✓
Paid VIP concept use	-	✓	-	-	-

SPECIAL ROOM TYPES PRIVILEGED SERVICES



GLORIA GOLF RESORT SPECIAL ROOM TYPES PRIVILEGES	GLORIA VILLA	EXECUTIVE VILLA	KING SUITE	OWNER VILLA
Villa Guest Relations Service	✓	✓	✓	✓
Private butler	•	•	•	✓
Private maid	•	•	•	✓
Buggy	•	•	•	✓
Pavillion (summer season)	•	•	✓	✓
3 hotels all-inclusive usage (except A la Carte Restaurants)	✓	✓	✓	✓
3 hotels A la Carte Restaurant usage	•	•	✓	✓
24-hour room service (from the menu)	•	•	✓	✓
23:00 - 07:00 room service (from the menu)	✓	✓	✓	✓
Special welcome set-up	✓	✓	✓	✓
VIP Bvlgari cosmetics	✓	✓	✓	✓
Wireless internet	✓	✓	✓	✓
High speed wireless internet	•	•	✓	✓
Private transfer airport - hotel - airport	•	•	✓	✓
Airport Fast Track service	•	•	✓	✓
Turkuaz Restaurant special breakfast (08:00 - 11:00, 1 June - 1 October)	✓	✓	✓	✓

• Subject to extra charge | ✓ Free of charge

*Guests staying in the Gloria Golf Resort King Suite and Owner Villa are entitled to use all A la Carte Restaurants once a week each free of charge except for the Teppanyaki Restaurant at Gloria Serenity Resort.

The Teppanyaki Restaurant is available for all guests to use at subcharge.

FOOD & BEVERAGE SERVICES

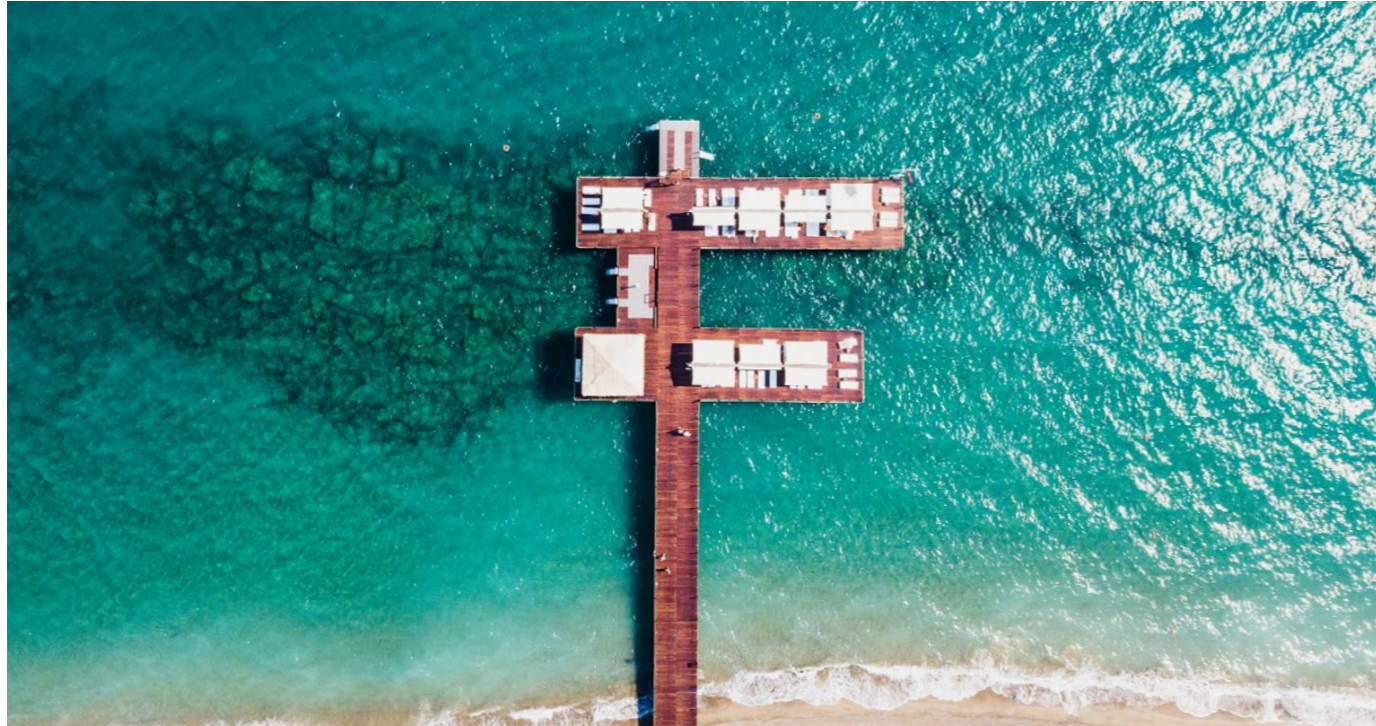
Restaurant	Konsept	Menü	Working Hours		Location	Details	Gloria All Inclusive
			Summer season	Winter season			
Anatolia Main Restaurant	International	Open buffet	Breakfast 07:00 - 10:30 Lunch 12:30 - 14:30 Dinner 19:00 - 21:30	Breakfast 07:00 - 10:30 Lunch 12:30 - 14:30 Dinner 18:30 - 21:00	Main building (covered dining area & terrace)	<ul style="list-style-type: none"> ✓ Detoxifying fresh fruit juices for breakfast ✓ Ice Cream Service 12:30 - 14:30 19:00 - 21:30 ✓ "Barista" coffee station ✓ "HIPP" products station ✓ Gluten-free, lactose-free, vegan and diet menu options available 	✓
Mosaique Main Restaurant	International	Open buffet	Breakfast 07:00 - 10:30 Lunch 12:30 - 14:30 Dinner 19:00 - 21:30 Night Snack 00:00 - 02:00	Breakfast 07:00 - 10:30 Lunch 12:30 - 14:30 Dinner 18:30 - 21:00	Main building (covered dining area & terrace)	<ul style="list-style-type: none"> ✓ Detoxifying fresh fruit juices for breakfast ✓ "Barista" coffee station ✓ "HIPP" products station ✓ Gluten-free, lactose-free, vegan and diet menu options available 	✓
Pescado A la Carte Restaurant	Spanish cuisine	A la carte	19:00 - 23:00	19:00 - 23:00	Main building, lobby level, indoor dining area	<ul style="list-style-type: none"> ✓ Subject to a fee ✓ Winter season free of charge 	
Harem A la Carte Restaurant	International	A la carte	19:00 - 23:00	19:00 - 23:00	Main building, lobby level, indoor dining area	<ul style="list-style-type: none"> ✓ Subject to a fee ✓ Winter season free of charge 	
L'ancora A la Carte Restaurant	Italian cuisine	A la carte	19:00 - 23:00	19:00 - 23:00	Main building, lobby level, indoor dining area & terrace	<ul style="list-style-type: none"> ✓ Subject to a fee ✓ Winter season free of charge ✓ Breakfast 08:00 - 11:00 	
L'ancora VIP Breakfast	International	A la carte	08:00 - 11:00	08:00 - 11:00	Main building, lobby level, indoor dining area & terrace	<ul style="list-style-type: none"> Exclusive breakfast for VIP guests and members of the Glorian loyalty program. 	
L'ancora Snack	International	A la carte	Closed	12:00 - 16:00	Main building, lobby level, indoor dining area & terrace		✓
Elia Greek Restaurant	Greek cuisine	A la carte	1 Haziran-31 Ekim 19:00 - 23:00	Closed	Open space, by the river	<ul style="list-style-type: none"> ✓ Subject to a fee ✓ Winter season closed 	
Turkuaz A la Carte Restaurant	Grill House & BBQ	A la carte	1 Haziran-31 Ekim 19:00 - 23:00	Closed	Poolside, outdoor area	<ul style="list-style-type: none"> ✓ Subject to a fee ✓ Winter season closed 	
Turkuaz Restaurant	International	A la carte	12:00 - 16:00	Closed	Poolside, outdoor area		✓
Gloria Pub	International	A la carte	12:00 - 16:00	Closed	Outdoor area by the river and pool	<ul style="list-style-type: none"> ✓ Ice cream service 09:00 - 19:00 	✓
Galeon Restaurant	International	A la carte	12:00 - 17:00	Closed	Beach and riverside, open space	<ul style="list-style-type: none"> ✓ Ice cream service 09:00 - 19:00 	✓
Garden Pool Restaurant	Continental	A la carte & open buffet	08:00 - 11:00	Closed	Family Suite by the pool, outdoor area		✓
Garden Pool Restaurant	International	A la carte	12:00 - 16:00	Closed	Family Suite by the pool, outdoor area	<ul style="list-style-type: none"> ✓ Ice cream service 09:00 - 18:30 	✓
Pavilion	Private food & beverage service on the beach	A la carte	09:00 - 17:00	Closed	On the beach, special for pavilion guests	<ul style="list-style-type: none"> ✓ Subject to a fee ✓ Butler service ✓ 09:00 - 18:00 beverage service ✓ 12:00 - 17:00 food service 	
Room service	Special menu	A la carte	24 hours paid	24 hours paid	In-room service	<ul style="list-style-type: none"> ✓ King Suite & Owner Villa 24 hours free of charge ✓ Gloria Villa & Executive Villa 23:00 - 07:00 is free of charge 	
What-When-Where Service	Children's menu	A la carte	24 hours	24 hours		<ul style="list-style-type: none"> ✓ Free of charge for the age range 00 - 03,99 years ✓ Requests must be notified to guest relations in advance 	✓

- Reservations for a la carte restaurants must be made at least 2 days in advance via Guest Relation Services. Food and drinks consumed in our other hotels will be charged at a 50% discount. The à la carte restaurants at the Gloria Serenity Resort & Gloria Verde Resort is charged per person, regardless of the room category. Guests staying in the King Suite and Owner Villa at Gloria Golf Resort are entitled to use all A la carte restaurants once a week each free of charge at Gloria Hotels & Resorts, except the Teppanyaki Restaurant at Gloria Serenity Resort.
- Platinum Card holders and Long Stay guests can use all A la carte restaurants once a week each free of charge at Gloria Hotels & Resorts, except the Teppanyaki Restaurant at Gloria Serenity Resort.
- A la carte restaurant service days may vary depending on the intensity of operation.

BARS

Bar	Concept	Menu	Working Hours		Location	Details	Gloria All Inclusive
			Summer season	Winter season			
Lobby Bar	Lobby Bar & Lounge	Alcoholic & non-alcoholic & hot drinks & fresh juices	24 hours	24 hours	Main building, lobby floor		✓
Oasis Bar	Bar & Lounge Patisserie	Alcoholic & non-alcoholic & hot drinks & fresh juices	11:00 - 00:00	11:00 - 00:00	Main building, lobby floor	<ul style="list-style-type: none"> From 1 May to 31 October Between 18:00 - 21:00 Sushi service is available. ✓ Waffle service 16:00 - 18:00 	✓
Garden Pool Bar	Pool Bar	Alcoholic & non-alcoholic & hot drinks & fresh juices	09:00 - 18:30	Closed	Family Suite by the pool, outdoor area	<ul style="list-style-type: none"> ✓ Ice cream service 09:00 - 18:30 	✓
Galeon Bar	Beach Bar	Alcoholic & non-alcoholic & hot drinks & fresh juices	09:00 - 19:00	Closed	By the beach, open area	<ul style="list-style-type: none"> ✓ Ice cream service 09:00 - 19:00 	✓
Pier Bar	Pier Bar	Alcoholic & non-alcoholic & hot drinks & fresh juices	09:00 - 19:00	Closed	On the pier, open space		✓
Gloria Pub	Bar	Alcoholic & non-alcoholic & hot drinks & fresh juices	09:00 - 00:00	Closed	Outdoor area by the river and pool	<ul style="list-style-type: none"> ✓ Ice cream service 09:00 - 19:00 	✓
Aqua Bar	Pool Bar	Soft & hot drinks & fresh juices	09:00 - 17:00	Closed	Outdoor area by the aquapark	<ul style="list-style-type: none"> ✓ Ice cream service 09:00 - 17:00 	✓
Cafe Gloria	Bar	Alcoholic & non-alcoholic & hot drinks & fresh juices	16:00 - 00:00	18:00 - 00:00	Main building, lobby floor, indoor area & terrace		✓
Olivium Pool Bar	Pool Bar	Alcoholic & non-alcoholic & hot drinks & fresh juices	08:00 - 20:00	08:00 - 20:00	Gloria Serenity Resort, by the heated pool, outdoor area	<ul style="list-style-type: none"> ✓ Common use of GHR 	✓
Wurlitzer Karaoke Bar	Karaoke Bar	Alcoholic & non-alcoholic & hot drinks & fresh juices	16:00 - 00:00	16:00 - 00:00	Gloria Serenity Resort, Game Center, indoor area	<ul style="list-style-type: none"> ✓ Common use of GHR 	✓
Insomnia Disco Bar	Disco Bar	Alcoholic & non-alcoholic & hot drinks & fresh juices	23:00 - 03:00	23:00 - 02:00 Only on Saturday	Gloria Serenity Resort, Game Center, indoor area	<ul style="list-style-type: none"> ✓ Common use of GHR 	✓
Arena Bar	Amphitheatre Bar	Alcoholic & soft drinks	Provides service during the activity	Closed	Gloria Serenity Resort, amphitheatre, open space	<ul style="list-style-type: none"> ✓ Common use of GHR 	✓
G-Venture Bar	Concert & Party Bar	Alcoholic & non-alcoholic & hot drinks & fresh juices	Provides service during the activity	Closed	Beach concert area	<ul style="list-style-type: none"> ✓ Common use of GHR 	✓
G-Venture Private Lounge	Concert & Party Bar	Alcoholic & non-alcoholic & hot drinks & fresh juices	Provides service during the activity	Closed	Beach concert area	<ul style="list-style-type: none"> ✓ Subject to a fee 	✓
Mini Bar	In-room mini bar	Alcoholic & soft drinks, tea, coffee, biscuits, chocolate, crispy apples, confectionery, crisps	During your stay	During your stay		<ul style="list-style-type: none"> ✓ Refilled once a day 	✓

POOLS AND BEACH



FEATURES

- Blue flag awarded
- 500 m long and clean sand-pebble beach
- Comfortable sunbeds
- Pier
- Opening and closing dates and times of beaches and pools may vary according to weather conditions

FACILITIES

- Snack restaurant
- Beach Bar
- Pier Bar
- Beach pavilions (surcharge)

BEACH ACTIVITIES AND SERVICES

- Beach volleyball
- Beverage service to sunbeds (soft drinks are served periodically between 10:00 - 18:00)
- Beach towel service
- Security
- Lifeguard

PAID SERVICES

- Water sports activities (08:00 - 20:00)
- Daily pavilion use (09:00 - 18:00)
- SPA treatment area

PAVILION DETAILS:

- Serves in summer season
- Working hours 09:00 - 18:00
- Shared butler service
- Special service for all pavilion guests
- 12:00 - 17:00 snack service from the menu
- Beverage menu
- Mini bar, safe, fan
- Towel
- Waiter call button



POOLS AND BEACH



GLORIA GOLF RESORT POOLS	STATE OF USE	OPEN	CLOSED	SEA WATER	SWEET WATER	DEPTH	AREA	SUMMER SEASON	WINTER SEASON	HEATED
Semi-Olympic Outdoor Pool	Communal area	✓			✓	180 cm	400 m ²	08:00-20:00	Closed	
Outdoor Pool	Communal area	✓			✓	140 cm	1280 m ²	08:00-20:00	Closed	
Child Pool	Communal area	✓			✓	50 cm	113 m ²	08:00-20:00	Closed	
Children's Sand Pool (with small slide)	Communal area	✓			✓	50 cm	153 m ²	08:00-20:00	Closed	
Family Suite Pool	Communal area	✓			✓	140 cm	420 m ²	08:00-20:00	Closed	
Family Suite Kids Pool	Communal area	✓			✓	50 cm	40 m ²	08:00-20:00	Closed	
Olivium Pool	Communal area	✓			✓	140 cm	500 m ²	08:00-20:00	08:00-20:00	✓
Olivium Children Pool	Communal area	✓			✓	50 cm	25 m ²	08:00-20:00	08:00-20:00	✓
Indoor pool (in the SPA centre) There is a lift for disabled guests to access the pool	Communal area		✓		✓	140 cm	113 m ²	08:00-20:00	08:00-20:00	✓
Children's Pool (in the SPA centre)	Communal area		✓		✓	50 cm	14 m ²	08:00-20:00	08:00-20:00	✓
Owner Villa Havuzu	Private	✓			✓	140 cm	78 m ²			✓
Aquapark Pools	Communal area		✓		✓	50 cm	14 m ²	08:00-20:00	08:00-20:00	✓

- Children under 12 years of age should enter the pool under the supervision of their parents.
- Smoking is prohibited around the children's pool area.
- Sunbeds and towels are free of charge.

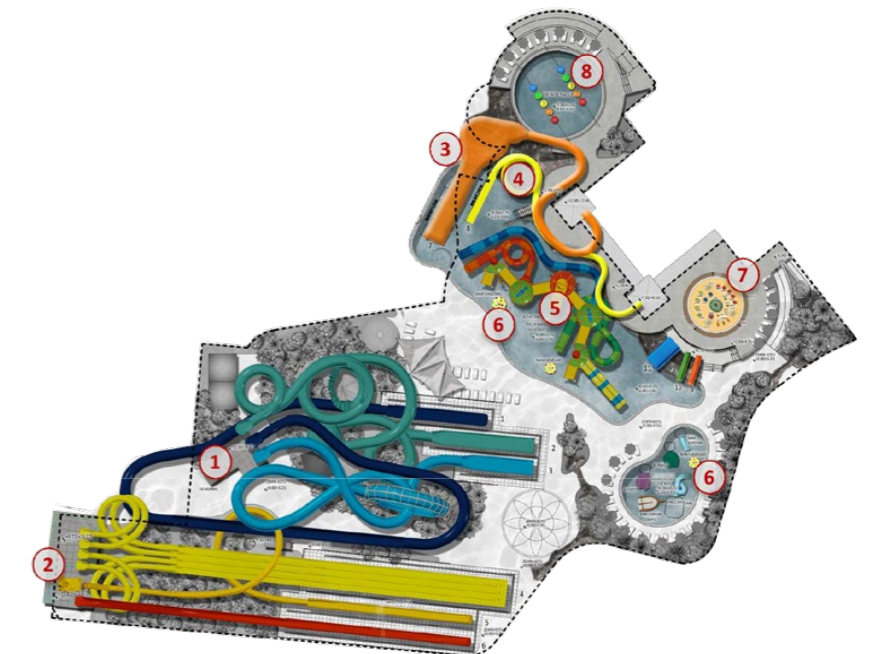
AQUAPARK



AQUAPARK



- LEJANT
1. AQUAPARK ENTRANCE
 2. WC&SHOWER
 3. CANOPY
 4. SUNBED
 5. UNNATURAL ROCK
 6. BOAT SLIDES
BLACKHOLE & UPHILL
FLYING BOATS KOMB.
FLYING SAW & SPHERE KOMB.
RIFT SLIDE
 7. FAST SLIDES
WINDIGO X4
LOOPING ROCKET
FREEFALL
 8. BODY MAGICONE
 9. AQUATUBE
 10. KIDS SLIDES
KIDS FREEFALL X2
KIDS WIDE SLIDE
 11. SPECIAL TYPE AQUAWATER
 12. SPRAY ACTION AREA (70m²)
 13. KIDS ANIMATIONS
 14. DEPOT FOR BOAT
 15. CAFE
 16. OBSTACLE TRACK



- LEJANT
1. MAIN SLIDES
BLACKHOLE & UPHILL
FLYING BOAST KOMB.
FLYING SAW & SPHERES COMB.
RIFT SLIDE
 2. FAST SLIDES
WINDIGO (4X)
LOOPING ROCKET
FREEFALL
 3. BODY MAGICONE
 4. AQUATUBE
 5. SPECIAL TYPE AQUATOWER
 6. KIDS ANIMATIONS
 7. SPRAY ACTION AREA (60m²)
 8. OBSTACLE TRACK

- It is forbidden to enter the pool when the Aquapark is closed.
- Aquapark opening and closing times may vary according to weather conditions.
- Between 1 May and 31 October, the Aquapark is open depending on weather conditions. Hotel management reserves the rights to close the Aquapark when deemed necessary.
- The warnings of the lifeguard on duty and the warning signs must be followed at all times.

LA SOURCE SPA

We present the spiritual touches found in the Far East in splendid harmony with soft musical tones that relax your soul while your aromatic massages revitalize your physical senses.



DETAILS

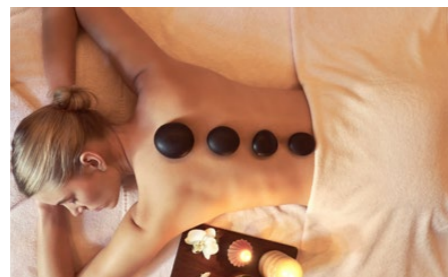
800 m² area Located in the main building, lobby floor.
It serves between 09:00 - 20:00 every day. Every day between 10:00 - 12:00, our guests under 12 years of age can use the Turkish bath, sauna and relaxation areas accompanied by their parents.
Children between the ages of 12 and 16 are allowed to use the Turkish bath, sauna and relaxation areas between 10:00 and 12:00 to ensure the peace and well-being of our guests.

SERVICES

Indoor pool
Indoor children's pool
Rest area
There is an accessible lift for guests with disabilities to reach the pool.
15 treatment rooms
1 private SPA Suite
Skin, face, and body treatments (world-famous brands such as Thermes Marins, Jüliette Armand and CACI Ultra...)
Massages and treatments
1 private bath
Hairdresser services
Manicure - pedicure
1 Bio & 1 Fin sauna
1 Turkish bath
Steam room
Changing rooms with lockers
SPA Pavilion (closed in winter)

PAID SERVICES

All massage services
All hammam services
All skin, face, and body care services
Hairdresser services
Manicure - pedicure
SPA cosmetics
SPA Pavilion



MEETINGS, ORGANISATIONS AND WEDDINGS

Meeting rooms and equipment are subject to additional charges. Please contact our MICE department for special service and price details for meeting groups.



MEETING ROOM	LENGTH	WIDTH	AREA	HEIGHT	BANKET	U TABLE LAYOUT	THEATRE	CLASS
Manyas	48 m	22 m	1056 m ²	7 m	800 Person	-	1200 Person	750 Person
Manyas I, III	15 m	22 m	330 m ²	7 m	220 Person	60 Person	350 Person	200 Person
Manyas II	17,5 m	22 m	396 m ²	7 m	260 Person	60 Person	430 Person	250 Person
Foyer / Foyer	-	-	845 m ²	-	-	-	-	-

MEETING ROOM	LENGTH	WIDTH	AREA	HEIGHT	BANKET	U TABLE LAYOUT	THEATRE	CLASS
Kırlangıç	39 m	17 m	663 m ²	5 m	450 Person	-	720 Person	420 Person
Kırlangıç II	13 m	17 m	221 m ²	5 m	150 Person	42 Person	240 Person	140 Person
Kırlangıç I, III	12,5 m	17 m	210 m ²	5 m	150 Person	36 Person	240 Person	140 Person

MEETING ROOM	LENGTH	WIDTH	AREA	HEIGHT	BANKET	U TABLE LAYOUT	THEATRE	CLASS
Turna (Takes Daylight)	16,5 m	7 m	115 m ²	3 m	70 Person	45 Person	100 Person	70 Person
Turna I	7 m	7 m	50 m ²	3 m	-	15 Person	50 Person	35 Person
Turna II	5 m	7 m	35 m ²	3 m	-	15 Person	30 Person	20 Person
Turna III	4,5 m	7 m	32 m ²	3 m	-	15 Person	20 Person	15 Person

MEETING ROOM	LENGTH	WIDTH	AREA	HEIGHT	BANKET	U TABLE LAYOUT	THEATRE	CLASS
Anka (Takes Daylight)	22 m	6,5 m	143 m ²	3 m	-	60 Person	120 Person	90 Person
Anka I, II, III, IV	5,5 m	6,5 m	35 m ²	3 m	-	15 Person	30 Person	20 Person
Martı (Takes Daylight)	5,5 m	5,5 m	30 m ²	3 m	-	15 Person	15 Person	-
Saka	4,5 m	5 m	23 m ²	3 m	-	-	15 Person	-
Kumru (Takes Daylight)	7,5 m	5,5 m	42 m ²	3 m	-	20 Person	30 Person	20 Person

As Gloria Hotels & Resorts, we would like to share your happiness as you set sail for the new beginning in your life.

Gloria Hotels & Resorts has an experienced cuisine with all kinds of flavours and an efficient team to make your wedding unforgettable. All you need to do is say 'YES'. Gloria Hotels & Resorts will take care of all the details...

At Gloria Hotels & Resorts we want to thank you for the trust you have put in us - and we promise to support you in all your special celebrations.

GLORIA GOLF RESORT - MAP



GLORIA GOLF RESORT - MAP

ROOMS

- A. Main Building
- B. Executive Villas
- C. Gloria Villas
- D. Garden Buildings & Junior Suites
- E. Executive Villas
- F. Junior Suites
- J. Family Suites
- K. Owner Villas

FOOD & BEVERAGE

- 1. Anatolia Main Restaurant
- 2. Mosaïque Main Restaurant
- 3. Oasis Bar
- 4. Garden Pool Bar
- 5. Pier Bar
- 6. Aqua Bar

BEACH & POOL

- 7. Beach Pavilions (Extra)
- 8. Children Pool
- 9. Towel Desk
- 10. Aquapark
- 11. Olivium Pool
(Heated in winter time)

KIDS

- 12. Gogi Fun Jungle
- 13. Gogi Kids Club

OUTLETS & FACILITIES

- 14. Guest Relations
- 15. Shopping Area
- 16. La Source Spa, Indoor Pool
- 17. Wellness Area
- 18. Convention Center
- 19. Doctor

ACTIVITIES

- 20. Arena & Entertainment Center,
Insomnia Night Club
- 21. Tennis Courts
- 22. Beach Volley
- 23. G-Venture
- 24. Football Field
- 25. Gloria Mini Farm
- 26. Fit Gloria



GLORIA VERDE RESORT

The Magnificent Combination of the Green and the Blue...

The Gloria Verde Resort is located in Belek, in the pine forests of the Mediterranean, directly on the seafront. Thanks to its matchless nature and outstanding service concept, Gloria Verde offers an unforgettable vacation experience for your family. The opportunity to enjoy every moment of your vacation in nature, comfortably and quietly awaits you...

Gloria Verde Resort offers more than what you expect from your vacation.



GENERAL INFORMATION

Gloria Verde Resort opening date: 2001
 Category: 5* Hotel
 Company: Özaltın Holding
 Season: Full Year
 Gloria Hotels & Resorts total area: 2.400.000 m²
 Gloria Verde Resort area: 68.000 m²
 Address: Belek Mah. 20. Sokak No: 7, Serik - Antalya / Türkiye
 Telephone: +90 242 710 05 00
 E-mail: info@gloria.com.tr
 Website: www.gloria.com.tr
 WI-FI: Rooms and public areas (free of charge)
 High-speed internet in rooms and public areas (surcharge)
 Credit cards: Visa, Mastercard, Amex
 Languages Spoken: Turkish, English, Russian, German
 To download current pictures, videos and factsheets: stock.gloria.com.tr

ACCOMMODATION

The hotel has a 6-storey main building, 4 lifts in total, 1 of which is between the Lobby and the Zodiac Bar, the other 3 of which serve each floor. In the garden, there are 3 wings of 3 floors with suites and family suites. On the golf course side, there is 1 Presidential Villa and Select Villas consisting of 2 floors.

ACCOMMODATION POLICY

Pets not allowed
 Hotel check-in time: 06:00
 Hotel check-out time: 19:00
 Room check-in time: 14:00
 Room check-out time: 12:00
 Early check-in and late check-out policy: Early check-in or late check-out is subject to a charge according to availability. Subject to availability, early check-in before 08:00 or late check-out after 19:00 is charged at 100% of the daily room rate.
 Smoking: The use of tobacco products and electronic cigarettes is not permitted indoors.
 Age limit policy: Guests under 18 years of age are not accommodated without a parent.
 Visitor policy: The admission of visitors to the hotel is subject to a fee. Visitors are required to present their passport or identity card upon arrival. Visitors are not permitted in guest rooms.
 Transfer between hotels: Guests are provided with free shuttle service between Gloria hotels.

LOCATION & TRANSPORT

Antalya Airport: 38 km
 Gazipasa Airport: 150 km
 Antalya City Centre: 48 km
 Nearest Settlement Centre: 3,5 km (Belek)
 Beach: Private sand/gravel beach and 1 pier
 Gloria Golf Club: 1 km

ROOM DETAILS

Total Rooms: 293
 Standard Room: 148
 Suites: 124
 Villas: 21
 Bed Capacity: 732
 Room Distribution: 144 Standard Rooms + 4 Disabled Rooms, 22 Junior Suites, 46 Suites, 46 Family Suites, 8 Deluxe Suites, 2 King Suites, 20 Select Villas, 1 Presidential Villa

STANDARD ROOM

Main building | 27 m² + 5 m² Balcony | Garden view
Maximum number of Person: 2 adults + 2 children (0 - 11.99) | 3 adults



ROOM FEATURES

- 1 room
- Carpet floor (parquet in ground floor rooms)
- Sitting area with single armchair
- Wardrobe
- Curtains
- Writing desk
- Balcony or terrace
- Chairs and coffee table set on the balcony or terrace
- Laundry drying rack on the balcony or terrace
- Central air conditioning
- Full-length mirror
- Suitcase rack

BED

- 2 Queen beds (140x200)
- Special manufactured bed
- Pillow menu
- Baby Cot (available on request, 70x110)
- Rollaway extra bed (available on request, 90x200)

BATHROOM

- Shower cabin and WC
- Gloria bath and shower products
- Chicco baby bath products (optional)
- Children's bathrobe (optional, 2 - 11.99)
- Bathrobe
- Slippers
- Illuminated make-up mirror
- Hair dryer
- Telephone
- Scales

TECHNOLOGY

- LCD TV - IP TV
- Telephone
- Safe box
- Wireless internet access

SERVICES & FACILITIES

- Kettle
- Tea & coffee set-up
- Daily cleaning
- Towel change every other day
- Minibar (refilled 1 time a day free of charge)
- Laundry services (extra charge, available between 08:00 - 00:00)



*There are 4 Standard rooms that are tailored to the needs of our disabled guests.



JUNIOR SUITE

Main building | 31 m² + 5² Balcony | Garden view
Maximum number of Person: 2 adults + 2 children (0 - 11.99) | 3 adults



ROOM FEATURES

- 1 room
- Carpet floor (parquet in ground floor rooms)
- Living area with sofa and coffee table
- Table and chair set
- Writing desk
- Wardrobe
- Curtains
- Balcony or terrace
- Chairs and coffee table set on the balcony or terrace
- Laundry drying rack on the balcony or terrace
- Central air conditioning
- Full-length mirror
- Suitcase rack

BED

- 1 French bed (180x200)
- Special manufactured bed
- Pillow menu
- Baby Cot (available on request, 70x110)
- Rollaway extra bed (available on request, 90x200)

BATHROOM

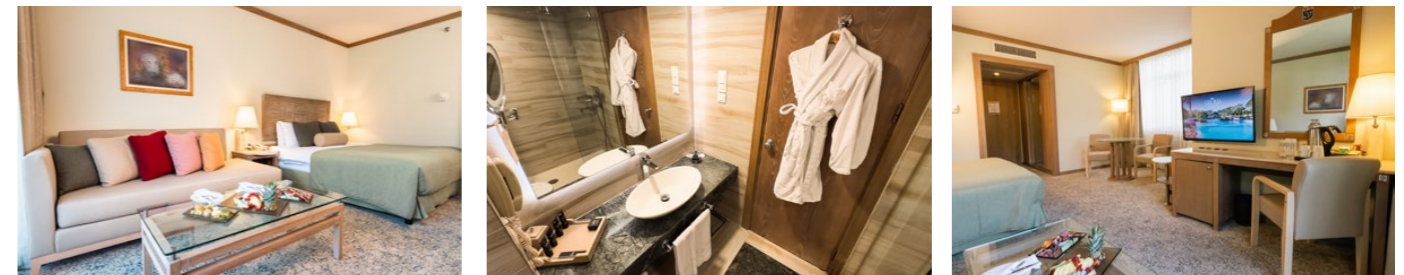
- Shower cabin and WC
- Gloria bath and shower products
- Chicco baby bath products (optional)
- Children's bathrobe (optional, 2 - 11.99)
- Bathrobe
- Slippers
- Illuminated make-up mirror
- Hair dryer
- Telephone
- Scales

TECHNOLOGY

- LCD TV - IP TV
- Telephone
- Safe box
- Wireless internet access

SERVICES & FACILITIES

- Kettle
- Tea & coffee set-up
- Daily cleaning
- Towel change every other day
- Minibar (refilled 1 time a day free of charge)
- Laundry services (surcharge, available between 08:00 - 00:00)



SUITE

Main building - Garden building (upper floors) | 40 m² + 5 m² Balcony | Garden view
Maximum number of Person: 2 adults + 2 children (0 - 11.99) | 3 adults + 1 child (0 - 11.99)



ROOM FEATURES

- 2 rooms: 1 bedroom & 1 living room
- Carpet floor (parquet in ground floor rooms)
- Sitting area with sofa, single armchair, pouf and coffee table
- Writing desk
- Wardrobe
- Curtains
- Balcony or terrace
- Chairs and coffee table set on the balcony or terrace
- Laundry drying rack on the balcony or terrace
- Central air conditioning
- Full-length mirror
- Suitcase rack

BED

- 1 French bed (180x200)
- Special manufactured bed
- Pillow menu
- Baby Cot (available on request, 70x110)
- Rollaway extra bed (available on request, 90x200)

BATHROOM

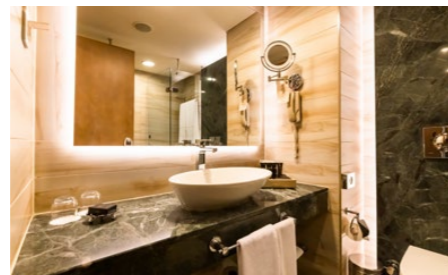
- Shower cabin and WC (single bathroom, main building rooms)
- Bath and WC (single bathroom, garden building rooms)
- Gloria bath and shower products
- Chicco baby bath products (optional)
- Children's bathrobe (optional, 2 - 11.99)
- Bathrobe
- Slippers
- Illuminated make-up mirror
- Hair dryer
- Telephone
- Scales

TECHNOLOGY

- 2 LCD TV - IP TV
- Telephone
- Safe box
- Wireless internet access

SERVICES & FACILITIES

- Schiller capsule coffee machine & herbal teas
- Kettle
- Daily cleaning
- Towel change every other day
- Minibar (refilled 1 time a day free of charge)
- Laundry services (extra charge, available between 08:00 - 00:00)



FAMILY SUITE

Garden building | 40 m² + 5 m² Balcony | Garden view
Maximum number of Person: 4 adults + 1 child (0 - 11.99)



ROOM FEATURES

- 2 rooms: 2 bedrooms
- Carpet floor (parquet in ground floor rooms)
- Writing desk
- Wardrobe
- Curtains
- Balcony or terrace
- Chairs and coffee table set on the balcony or terrace
- Laundry drying rack on the balcony or terrace
- Central air conditioning
- Full-length mirror
- Suitcase rack

BED

- First bedroom: 1 French bed (180x200)
- Second bedroom: 2 single beds (100x200)
- Special manufactured bed
- Pillow menu
- Baby Cot (available on request, 70x110)
- Rollaway extra bed (available on request, 90x200)

BATHROOM

- Bath and WC (one bathroom)
- Gloria bath and shower products
- Chicco baby bath products (optional)
- Children's bathrobe (optional, 2 - 11.99)
- Bathrobe
- Slippers
- Illuminated make-up mirror
- Hair dryer
- Telephone
- Scales

TECHNOLOGY

- 2 LCD TVs - IP TV
- Telephone
- Safe box
- Wireless internet access

SERVICES & FACILITIES

- Kettle
- Tea & coffee set-up
- Daily cleaning
- Towel change every other day
- Minibar (refilled 1 time a day free of charge)
- Laundry services (extra charge, available between 08:00 - 00:00)



DELUXE SUITE

Main building | 75 m² + 8 m² Balcony | Garden view
Maximum number of Person: 4 adults + 1 child (0 - 11.99)



ROOM FEATURES

- 2 rooms: 2 bedrooms
- Carpet floor (parquet in ground floor rooms)
- First room: living group with sofa, single armchair and coffee table
- Second room: sitting area with sofa, pouffe and coffee table
- 2 writing desks (one in each room)
- Wardrobe
- Curtains
- Balcony or terrace
- Chairs and coffee table set on the balcony or terrace
- Laundry drying rack on the balcony or terrace
- Central air conditioning
- Full-length mirror
- Suitcase rack

BED

- First bedroom: 2 Queen beds (140x200)
- Second bedroom: 2 single beds (100x200)
- Special manufactured bed
- Pillow menu
- Baby Cot (available on request, 70x110)
- Rollaway extra bed (available on request, 90x200)

BATHROOM

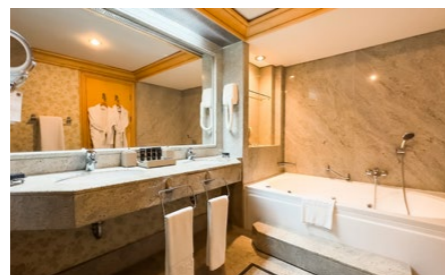
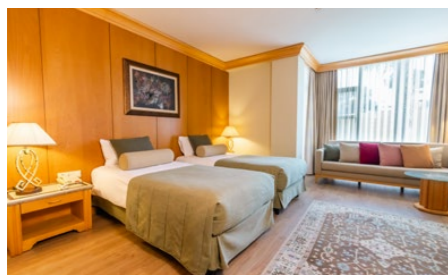
- 2 separate bathrooms
- First bathroom: shower cabin, whirlpool and WC
- Second bathroom: shower cabin and WC
- Bvlgari bath and shower products
- Chicco baby bath products (optional)
- Children's bathrobe (optional, 2 - 11.99)
- Bathrobe
- Slippers
- Illuminated make-up mirror
- Hair dryer
- Telephone
- Scales

TECHNOLOGY

- 2 LCD TVs - IP TV
- Telephone
- Safe box
- Wireless internet access

SERVICES & FACILITIES

- Schiller capsule coffee machine & herbal teas
- Kettle
- Daily cleaning
- Daily towel change
- Turndown service
- Minibar (refilled 1 time a day free of charge)
- Laundry services (extra charge, available between 08:00 - 00:00)



KING SUITE

Main building | 155 m² + 16 m² Balcony | Garden view
Maximum number of Person : 4 adults + 2 children (0 - 11.99) | 5 adults



ROOM FEATURES

- 3 rooms: 2 bedrooms & 1 living room
- Carpet floor (in bedrooms)
- Parquet floor (in the living room)
- Living room: study corner, dining table, sitting area with sofa, single armchair and coffee table
- First bedroom: sitting group with single armchair and coffee table, study desk
- Second bedroom: living group with sofa, single armchair and coffee table, study desk
- Dressing room
- Wardrobe
- Curtains
- 2 balconies
- Set of chairs and coffee tables on balconies
- Laundry drying rack on the balcony
- Central air conditioning
- Full-length mirror
- Suitcase rack

BED

- First bedroom: 1 King-size bed (200x200)
- Second bedroom: 2 Queen beds (140x200)
- Special manufactured bed
- Pillow menu
- Baby Cot (available on request, 70x110)
- Rollaway extra bed (available on request, 90x200)

BATHROOM

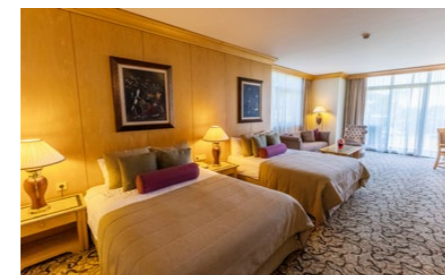
- 2 separate bathrooms and 3 WCs
- First bathroom: shower cabin, whirlpool and WC
- Second bathroom: shower cabin, whirlpool and WC
- Bvlgari bath and shower products
- Chicco baby bath products (optional)
- Children's bathrobe (optional, 2 - 11.99)
- Bathrobe
- Slippers
- Illuminated make-up mirror
- Hair dryer
- Telephone
- Scales

TECHNOLOGY

- 3 LCD TVs - IP TV
- Telephone
- Safe box
- High-speed wireless internet access

SERVICES & FACILITIES

- Schiller capsule coffee machine & herbal teas
- Kettle
- Iron and ironing board
- Daily cleaning
- Daily towel change
- Turndown service
- Minibar (refilled 1 time a day free of charge)
- Laundry services (extra charge, available between 08:00 - 00:00)



SELECT VILLA

Garden | Duplex | 86 m² | Garden, golf course and communal pool view
Maximum number of Person: 4 adults + 2 children (0 - 11.99) | 5 adults



ROOM FEATURES

- 3 rooms: 2 bedrooms & 1 living room
- Parquet floor (in bedrooms)
- Granite floor (in the living room)
- Living room: kitchen corner, washbasin, dining table, sitting area with table and coffee table
- First bedroom: study desk
- Second bedroom: study desk
- Wardrobe
- Curtains
- Private terrace
- Table, chair set and sunbed on the terrace
- Laundry drying rack on the terrace
- Central air conditioning
- Full-length mirror
- Suitcase rack
- Direct access to the common pool

BED

- First bedroom (upper floor): 1 French bed (180x200)
- Second bedroom (ground floor): 2 single beds (100x200)
- Special manufactured bed
- Pillow menu
- Baby Cot (available on request, 70x110)
- Rollaway extra bed (available on request, 90x200)

BATHROOM

- 2 separate bathrooms and 2 WCs
- First bathroom (upper floor): double washbasin, shower cabin, whirlpool and WC
- Second bathroom (ground floor): shower cabin and WC
- Bvlgari bath and shower products
- Chicco baby bath products (optional)
- Children's bathrobe (optional, 2 - 11.99)
- Bathrobe
- Slippers
- Illuminated make-up mirror
- Hair dryer
- Telephone
- Scales

TECHNOLOGY

- 3 LCD TVs - IP TV
- Telephone
- Safe box
- Wireless internet access

SERVICES & FACILITIES

- Schiller capsule coffee machine & herbal teas
- Kettle
- Iron and ironing board
- Washing machine with dryer
- Daily cleaning
- Daily towel change
- Turndown service
- Minibar (refilled 1 time a day free of charge)
- Laundry services (surcharge, available between 08:00 - 00:00)



VERDE PRESIDENTIAL VILLA

Garden | Duplex | 700 m² | Garden, golf course and private pool view
Maximum number of Person: 10 adults + 1 child (0 - 11.99)



ROOM FEATURES

- 7 rooms: 6 bedrooms & 1 living room
- Large working room (meeting table, armchair and coffee table set)
- Secretary room (desk, armchair and coffee table set)
- Carpet or parquet floor (in bedrooms)
- Granite and parquet floor (in the living room)
- Private professional kitchen
- Fitness area (sauna & whirlpool)
- Private pool (140 cm deep, 120 m²)
- Hammock and sunbed by the pool
- Private car parking
- Living room: mobile bar, dining table, games table, sitting area with sofa, single armchair and coffee table
- Bedrooms (except master bedroom): writing desk
- Dressing room in the master bedroom
- Wardrobe
- Curtains
- Private terrace
- Table and chair set on the terrace
- VRF (independent) air conditioning
- Full-length mirror
- Suitcase rack

BED

- Upstairs:
 - 1st bedroom: 1 King-size bed (200x200)
 - 2nd bedroom: 2 Queen beds (140x200)
 - 3rd bedroom: 2 Queen beds (140x200)
- Ground floor:
 - 4th bedroom: 1 Queen bed (140x200)
 - 5th bedroom: 1 Queen bed (140x200)
 - 6th bedroom: 2 single beds (100x200)
- Special manufactured bed
- Pillow menu
- Baby Cot (available on request, 70x110)
- Rollaway extra bed (available on request, 90x200)

BATHROOM

- 6 separate bathrooms and 8 WCs
- Upstairs:
 - 1st bathroom: double washbasin, shower cabin, whirlpool and WC
 - 2nd bathroom: bath and WC
 - 3rd bathroom: bath and WC
- Ground floor:
 - 4th bathroom: shower cabin and WC
 - 5th bathroom: shower cabin and WC
 - 6th bathroom: shower cabin and WC
- Bvlgari bath and shower products

- Chicco baby bath products (optional)
- Children's bathrobe (optional, 2 - 11.99)
- Bathrobe
- Slippers
- Illuminated make-up mirror
- Hair dryer
- Telephone
- Scales

TECHNOLOGY

- 7 LCD TVs - IP TV
- Telephone
- Safe box
- High-speed wireless internet access

SERVICES & FACILITIES

- Schiller capsule coffee machine & herbal teas
- Kettle
- Iron and ironing board
- Daily cleaning
- Daily towel change
- Turndown service
- Minibar (refilled 1 time a day free of charge)
- Laundry services (extra charge, available between 08:00 - 00:00)
- Washer dryer



ROOM OVERVIEW



Room Type	Location	View	Maximum number of people	Number of rooms	Bed-room	Living room	Bed	Shower + bathtub	Room dimensions	Total
Standard Room	Main building	Garden view	2 adults + 2 children (0 - 11.99), 3 adults	1	1	-	2 Queen beds (140x200)	1 shower	27 m ²	148
Junior Suite	Main building	Garden view	2 adults + 2 children (0 - 11.99), 3 adults	1	1	-	1 French bed (180x200)	1 shower	31 m ²	22
Suite	Main building & garden	Garden view	2 adults + 2 children (0 - 11.99), 3 adults + 1 child (0 - 11.99)	2	1	1	1 French bed (180x200)	1 shower (main building) & 1 bath (garden)	40 m ²	46
Family Suite	Garden	Garden view	4 adults + 1 child (0 - 11.99)	2	2	-	1 French bed (180x200) & 2 single beds (100x200)	1 bathtub	40 m ²	46
Deluxe Suite	Main building	Garden view	4 adults + 1 child (0 - 11.99)	2	2	-	2 Queen beds (140x200) & 2 single beds (100x200)	2 showers & 1 whirlpool	80 m ²	8
King Suite	Main building	Garden view	4 adults + 2 children (0 - 11.99), 5 adults	3	2	1	1 King bed (200x200) & 2 Queen beds (140x200)	2 showers & 2 whirlpool	155 m ²	2
Select Villa	Garden	garden, golf course and shared pool	4 adults + 2 children (0 - 11.99), 5 adults	3	2	1+ kitchen corner	1 French bed (180x200) & 2 single beds (100x200)	2 showers & 1 whirlpool	86 m ²	20
Verde Presidential Villa	Garden	Garden, golf course and private pool	10 adults + 1 child (0 - 11.99)	7	6	1	1 King bed (200x200) & 6 Queen beds (140x200) & 2 single beds (100x200)	4 showers & 1 whirlpool & 2 bathtubs	700 m ²	1



VIP CONCEPT & PRIVILEGED SERVICES



All King Suite, Villa, Platinum Card guests benefit from a special VIP concept.

VIP concept: Enjoy the food and beverage services (except A la Carte) in our other hotels free of charge.

For guests who wish to book the VIP Concept: All F&B services at the Gloria Serenity Resort, Gloria Golf Resort and Gloria Verde Resort (except the à la carte restaurants in the evening) can be used as part of the concept at no extra charge. There is a daily charge per person for the VIP concept. It is possible to book the service for the entire stay or for single days.

Regardless of the room category, a special Long Stay concept is offered for guests staying 28 nights or more.

LONG STAY CONCEPT PRIVILEGES:

- VIP concept
- 24/7 free room service (from the menu)
- 50% discounted laundry service

	Gloria Verde Resort A la carte Restaurants	Gloria Serenity Resort & Gloria Golf Resort, Use of Main Restaurant, Snack Restaurant and Bar	Gloria Serenity Resort & Gloria Golf Resort Use of A la Carte Restaurants (except GSR Teppanyaki A la carte Restaurants)	24/7 room service (from the menu)	50% discounted laundry service
Select Villa	✓	✓	-	✓	-
Verde King Suite	✓	✓	-	✓	-
Verde Presidential Villa	✓	✓	✓	✓	-
Platinum Card holders	✓	✓	✓	✓	-
Long Stay	✓	✓	✓	✓	✓
Paid VIP concept use	✓	✓	-	-	-



SPECIAL ROOM TYPES PRIVILEGED SERVICES



GLORIA VERDE RESORT SPECIAL ROOM TYPES PRIVILEGES	SELECT VILLA	KING SUITE	VERDE PRESIDENTIAL VILLA
Villa guest relations service	✓	✓	✓
Private butler	•	•	✓
Special maid	•	•	✓
Private chef	•	•	✓
Pavilion (summer season)	•	✓	✓
Buggy	✓	•	✓
Select Restaurant (open in summer season)	✓	✓	✓
Select Bar (open in summer season)	✓	✓	✓
Select fitness, sauna, children's playroom (available in summer season)	✓	✓	✓
3 hotel all-inclusive use (excluding A la carte restaurants)	✓	✓	✓
3 hotel A la carte restaurants usage	•	•	✓*
24-hour room service (from the menu)	✓	✓	✓
Special welcome set-up	✓	✓	✓
VIP Bvlgari cosmetics	✓	✓	✓
Wireless internet	✓	✓	✓
High speed wireless internet	•	✓	✓
Private transfer airport - hotel - airport	•	✓	✓
Airport Fast Track service	•	✓	✓

• Subject to extra charge | ✓ Free of charge

*Guests staying at Gloria Verde Resort Presidential Villa are entitled to use all A la carte restaurants once a week each free of charge at Gloria Hotels & Resorts except for the Teppanyaki Restaurant at Gloria Serenity Resort.

The Teppanyaki Restaurant is available for all guests to use at subcharge.



FOOD AND BEVERAGE SERVICES

Restaurant	Concept	Menu	Working Hours		Location	Details	Gloria All Inclusive
			Summer season	Winter season			
Mythos Main Restaurant	International	Open buffet	Breakfast 07:00 - 10:30 Lunch 12:30 - 14:30 Dinner 19:00 - 21:30	Breakfast 07:00 - 10:30 Lunch 12:30 - 14:30 Dinner 18:30 - 21:00	Main building (covered dining area & terrace)	<ul style="list-style-type: none"> ✓ Detoxifying fresh fruit juices for breakfast ✓ Ice cream for dinner ✓ "Barista" coffee station ✓ "HIPP" products station ✓ **Gluten-free, lactose-free, vegan and diet menu options available 	✓
Bazilika A la Carte Restaurant	French cuisine	A la carte	19:00 - 23:00	19:00 - 23:00	Outdoor (covered dining area & terrace)		✓
La Famosa A la Carte Restaurant	Italian cuisine	A la carte	19:00 - 23:00	19:00 - 23:00	Main building, lobby level (covered dining area & terrace)		✓
Neptuno Bar & Snacks	Late continental breakfast	A la carte	10:30 - 12:00	Closed	By the beach, open area	✓ Ice cream service	✓
Neptuno Bar & Snacks	Continental cuisine	A la carte	12:00 - 18:00	Closed	By the beach, open area		✓
Verde Pub	Grill & mexican cuisine	A la carte	12:00 - 16:00	Closed	Poolside, outdoor area		✓
La Famosa Snack Restaurant	International	A la carte	Closed	12:00 - 16:00	Main building, lobby level, indoor dining area & terrace		✓
Gloria Patisserie	Desserts, cakes and handmade chocolates	Showcase	11:00 - 18:00	11:00 - 18:00	Main building (ground floor)		✓
Pavilion	food & beverage service on the beach	A la carte	09:00 - 18:00	Closed	On the beach, special for pavilion guests	<ul style="list-style-type: none"> ✓ Subject to a fee ✓ Butler service ✓ 09:00 - 18:00 beverage service ✓ 12:00 - 18:00 food service 	
Room service	Special menu	A la carte	24 hours paid	24 hours paid	Room service	<ul style="list-style-type: none"> ✓ 24-hour complimentary for King Suite, Select Villa & Presidential Villa guests ✓ 23:00 - 07:00 free of charge for other room categories (valid for the summer season) 	
What-When-Where Service	Children's menu	A la carte	24 hours	24 hours		<ul style="list-style-type: none"> ✓ Free of charge for the age range 00 - 03,99 years ✓ Requests must be notified to guest relations in advance 	✓

* 24-hour complimentary for King Suite, Select Villa & Presidential Villa guests 23:00 - 07:00 free of charge for other room categories (valid for the summer season)

** Preparations are made upon request. We do not have a ready-made menu.

• Reservations for a la carte restaurants must be made at least 2 days in advance via Guest Services. Reservations can be made once a week for each A la carte, subject to availability.

• Food and beverages consumed in our other hotels will be charged at a 50% discount.

• Use of the à la carte restaurants at the Gloria Serenity Resort & Gloria Golf Resort is charged per person, regardless of the room category.

• Guests staying at Gloria Verde Resort Presidential Villa are entitled to use all A la carte restaurants once a week each free of charge at Gloria Hotels & Resorts except Teppanyaki Restaurant at Gloria Serenity Resort.

• Platinum Card holders and Long Stay guests are entitled to use all A la carte restaurants once a week each free of charge at Gloria Hotels & Resorts except Teppanyaki Restaurant at Gloria Serenity Resort.

• A la carte restaurant service days may vary depending on the intensity of operation.



BARS

Bar	Concept	Menu	Working Hours		Location	Details	Gloria All Inclusive
			Summer season Winter season				
Lobby Bar	Lobby Bar & Lounge	Alcoholic & non-alcoholic & hot drinks & fresh juices	09:00 – 00:00	09:00 – 00:00	Main building, lobby floor		✓
Zodiac Bar	Bar & Lounge	Alcoholic & non-alcoholic & hot drinks & fresh juices	24 hours	24 hours	Main building, ground floor		✓
Pool Bar	Pool Bar	Alcoholic & non-alcoholic & hot drinks	09:00 – 18:00	Closed	Poolside, outdoor area	✓ Ice cream service	✓
Pier Bar	Pier Bar	Alcoholic & non-alcoholic & hot drinks & fresh juices	09:00 – 19:00	Closed	On the pier, open space		✓
Neptuno Bar	Beach Bar	Alcoholic & non-alcoholic & hot drinks & fresh juices	09:00 – 00:00	Closed	By the beach, open area	✓ Ice cream service 09:00 – 20:00	✓
Verde Pub Amfi Bar	Amphitheatre Bar	Alcoholic & non-alcoholic & hot drinks	Provides service during the activity	Closed	In the amphitheatre, open space		✓
Vital Bar	Detox Bar	Detox drinks	09:00 - 20:00	09:00 – 19:00	Main building, SPA centre, indoor area		✓
Olivium Pool Bar	Pool Bar	Alcoholic & non-alcoholic & hot drinks & fresh juices	08:00 - 20:00	08:00 – 20:00	Gloria Serenity Resort, by the heated pool, outdoor area	✓ Common use of GHR	✓
Wurlitzer Karaoke Bar	Karaoke Bar	Alcoholic & non-alcoholic & hot drinks & fresh juices	16:00 - 00:00	16:00 – 00:00	Gloria Serenity Resort, leisure centre, indoor area	✓ Common use of GHR	✓
Insomnia Disco Bar	Disco Bar	Alcoholic & non-alcoholic & hot drinks & fresh juices	23:00 - 03:00	23:00 – 02:00 Only on Saturday	Gloria Serenity Resort, leisure centre, indoor area	✓ Common use of GHR	✓
Arena Bar	Amphitheatre Bar	Alcoholic & soft drinks	Provides service during the activity	Closed	Gloria Serenity Resort, amphitheatre, open space	✓ Common use of GHR	✓
G-Venture Bar	Concert & Party Bar	Alcoholic & non-alcoholic & hot drinks & fresh juices	Provides service during the activity	Closed	Gloria Serenity Resort, beach concert area	✓ Common use of GHR	✓
G-Venture Private Lodges	Concert & Party Bar	Alcoholic & non-alcoholic & hot drinks & fresh juices	Provides service during the activity	Closed	Gloria Serenity Resort, beach concert area	✓ Subject to a fee	
Mini Bar	In-room mini bar	Alcoholic & soft drinks, tea, coffee, biscuits, chocolate, crispy apples, confectionery, crisps	During your stay	During your stay	Room	✓ Refilled once a day	✓



POOLS AND BEACH



FEATURES

- Blue flag awarded
- 120 m long and clean sand-pebble beach
- Comfortable sunbeds
- Pier
- Opening and closing dates and times of beaches and pools may vary according to weather conditions

FACILITIES

- Snack restaurant
- Beach Bar
- Pier Bar
- Beach pavilions (surcharge)

BEACH ACTIVITIES AND SERVICES

- Beach volleyball
- Beverage service to sunbeds (soft drinks) are served periodically between 10:00 - 18:00
- Beach towel service
- Security
- Lifeguard

PAID SERVICES

- Water sports activities (08:00 - 20:00)
- Daily pavilion use (09:00 - 18:00)
- SPA treatment area

PAVILION DETAILS:

- Working hours 09:00 - 18:00
- Shared butler service
- Special service for all pavilion guests
- 12:00 - 18:00 snacks from the menu
- Beverage menu within hotel concept
- Mini bar, safe, ventilator
- Towel
- Waiter call button

GLORIA VERDE RESORT POOLS	STATE OF USE	OPEN	CLOSED	SEA WATER	SWEET WATER	DEPTH	AREA	SUMMER SEASON	WINTER SEASON	HEATED
Main Outdoor Pool 1	Communal area	✓			✓	140 cm	400 m ²	08:00-19:00	Closed	
Main Outdoor Pool 2 (deep zone)	Communal area	✓			✓	200 cm	350 m ²	08:00- 19:00	Closed	
Main Outdoor Pool 3	Communal area	✓			✓	140 cm	225 m ²	08:00- 19:00	Closed	
Outdoor Children Pool	Communal area	✓			✓	35 cm	15 m ²	08:00- 19:00	Closed	
Children Sand Pool	Communal area	✓			✓	50 cm	320 m ²	08:00-19:00	Closed	
Indoor pool (in the SPA centre)	Private		✓		✓	140 cm	83 m ²	08:00-20:00	08:00- 20:00	✓
Indoor Children's Pool (in the SPA centre)	Private		✓		✓	35 cm	9 m ²	08:00-20:00	08:00-20:00	✓
Thalasso Indoor Pool (in the SPA centre) There is a small whirlpool in the outside area that can be accessed from the pool There is a lift for disabled guests to access the pool	Private		✓	✓		140 cm	65 m ²	09:00-19:00	09:00-19:00	✓
Select Villa Pool*	Private	✓			✓	140 cm	430 m ²	08:00- 19:00	Closed	
Select Villa Child Pool*	Private	✓			✓	35 cm	14 m ²	08:00-19:00	Closed	
Presidential Villa Pool	Private	✓			✓	140 cm	120 m ²		Closed	
Aquapark Pool	Communal area	✓			✓	120cm-160cm	61 m ²	10:00-12:00 14:00-16:00	Closed	

- Children under 12 years of age should enter the pool under the supervision of their parents.
- Smoking is prohibited around the children's pool area.
- Sunbeds and towels are free of charge.



AQUAPARK

Gloria Verde Resort has a total of 8 slides, 4 for adults and 4 for children.



AQUAPARK	OPEN	SWEET WATER	DEEPNESS	ALAN	SUMMER SEASON	WINTER SEASON
Tube Slide	✓	✓	120 cm	23 m ²	10:00 – 12:00 / 14:00 – 16:00	Closed
Multi Slide	✓	✓	120 cm	23 m ²	10:00 – 12:00 / 14:00 – 16:00	Closed
Body Slide	✓	✓	120 cm	62 m ²	10:00 – 12:00 / 14:00 – 16:00	Closed
Space Hole + Tube Slide	✓	✓	160 cm	57 m ²	10:00 – 12:00 / 14:00 – 16:00	Closed

- Children under 10 years of age are not allowed to use "Space Hole" slides for their health and safety. Parents are responsible.
- It is forbidden to enter the pool when the Aquapark is closed.
- Aquapark opening and closing dates and times may vary according to weather conditions
- Between 1 May and 31 October, the Aquapark is open depending on weather conditions. Hotel management reserves the right to close the Aquapark when deemed necessary
- The warnings of the lifeguard on duty and the warning signs must be followed at all times.



ASKLEPION SPA & THALASSO

Certified Spa therapists with international experience, world-renowned care products, purifying and relaxing effect of purified sea water, seaweed and salt, Turkish bath, sauna, private hairdresser and much more...



DETAILS

1800 m² area
Located on the ground floor of the main building
It serves between 09:00 - 20:00 every day
Every day between 10:00 - 12:00, our guests under 12 years of age can use the Turkish bath, sauna and relaxation areas accompanied by their parents.
Children between 12 - 16 years of age are allowed to use the Turkish bath, sauna and relaxation areas between 10:00 - 12:00 to ensure the peace and well-being of our guests. Children under 12 years of age are not suitable to use the Thalasso pool in terms of safety and health.

THALASSO

Specially purified seawater heated to 32 degrees, health-boosting therapies that accelerate blood circulation while purifying the body, special care cures that help your body regain lost minerals and whose formula is hidden in the depths of history...

SERVICES

Thalasso Pool (12+) 09:00 - 12:00 & 15:00 - 19:00
Indoor pool
Indoor children's pool
Rest area
Vital Bar
There is an accessible lift for guests with disabilities to reach the pool (Thalasso pool)
15 treatment rooms
1 private SPA Suite
Skin, face, and body treatments (world-famous brands such as Thermes Marins, Jüliette Armand and CACI Ultra...)
Massages and treatments
1 private bath
Hairdresser services
Manicure - pedicure
1 Bio & 1 Fin sauna
1 Turkish bath
Ice fountain
Changing rooms with lockers
SPA Pavilion (closed in winter)

PAID SERVICES

All massage services
All hammam services
All skin, face, and body care services
Hairdresser services
Manicure - pedicure
SPA cosmetics
SPA Pavilion



GLORIA VERDE RESORT - MAP



GLORIA VERDE RESORT - MAP

ROOMS

- A. Main Building
- B. Family Suites
- C. Select Villas
- D. Presidential Villa

OUTLETS & FACILITIES

- 1. Guest Relations
- 2. Shopping Area
- 3. Asklepion Spa – Thalasso (Indoor & Thalasso Pool)
- 4. Tunnel
- 5. Doctor

FOOD & BEVERAGE

- 6. Mythos Main Restaurant & Terrace
- 7. Lobby Bar
- 8. Zodiac Bar
- 9. Pool Bar
- 10. Pier Bar

KIDS

- 11. Gogi Kids Club

BEACH & POOL

- 12. Beach Pavilions
- 13. Kids Pool
- 14. Towel Desk
- 15. Water Slides

ACTIVITIES

- 16. Tennis Court & Mini Football
- 17. Amphitheatre
- 18. Fit Gloria
- 19. Archery
- 20. Bowling & Game Area
- 21. Aerobic Area
- 22. Beach Volleyball
- 23. Water Sports

SELECT VILLAS AREA

- 24. Select Fitness Center&Sauna
- 25. Select Kids Playground
- 26. Parking (outdoor) & Electric vehicle charging station

MEETINGS, ORGANISATIONS AND WEDDINGS

Meeting rooms and equipment are subject to additional charges.
Please contact our MICE department for special service and price details for meeting groups.



MEETING ROOM	LENGTH	WIDTH	ALAN	HEIGHT	BANKET	THEATRE	CLASS
Daphne I, II, III	32 m	16,5 m	528 m ²	6 m	350 Person	650 Person	380 Person
Daphne I	9,5 m	16,5 m	156 m ²	6 m	80 Person	120 Person	80 people
Daphne II	12,5 m	16,5 m	206 m ²	6 m	130 Person	230 Person	120 Person
Daphne III (Receives Daylight)	10 m	16,5 m	165 m ²	6 m	100 Person	180 Person	100 Person

As Gloria Hotels & Resorts, we would like to share your happiness as you set sail for the new beginning in your life.

Gloria Hotels & Resorts has an experienced cuisine with all kinds of flavours and an efficient team to make your wedding unforgettable. All you need to do is say 'YES'. Gloria Hotels & Resorts will take care of all the details...

At Gloria Hotels & Resorts we want to thank you for the trust you have put in us - and we promise to support you in all your special celebrations.



THE WORLD OF GLORIA



ACTIVITIES FOR CHILDREN AND TEENS

The following services are available for all guests of Gloria Hotels & Resorts.



GOGI VIM

Very Important Minis
1 – 3 Years

Gloria Serenity Resort
Gloria Golf Resort
Gloria Verde Resort

Highchairs and disposable bibs are available free of charge in all our restaurants.

Free of charge services (one-off items according to the number of babies in the family):

- Baby bottle washing brush
- Wet wipes (travel size)
- Feeding spoon
- Baby nail clippers
- Baby bottle
- Pacifier (+6 months)
- Nappies (only in case of emergency)

For the room (available on request):

- Baby bed
- Bed railing
- Toilet adapter
- Bedpan
- Washbasin step
- Baby bathtub
- Baby basin and detergent
- Glorian Baby Kit bag (0-3 years): Chicco body shampoo and hair shampoo, body lotion, sponge loofah and baby or child bathrobe (2-12 years)

Products used in Gogi Kids Club:

- Baby bottle warmer*
 - Steriliser*
 - Thermometer
- * If there is a request for use in the room, guest relations are notified.

Products subject to a fee:

- Playpen
- Baby carriage
- Baby monitor

CHILDREN'S OUTDOOR AREAS

- Aquapark (Gloria Golf Resort & Gloria Verde Resort)
- Mini football pitch (Gloria Golf Resort & Gloria Verde Resort)
- Basketball court (Gloria Serenity Resort & Gloria Verde Resort)
- Children's pool with sandy floor (Gloria

Golf Resort & Gloria Verde Resort)

- Trampoline (Gloria Serenity Resort & Gloria Golf Resort on the beach)
- Art Studio (subject to a fee) (Gloria Serenity Resort & Gloria Golf Resort)

EAGLE TEAM SPORTS ACADEMY 5 – 13 Years

Gloria Serenity Resort
Gloria Golf Resort
Gloria Verde Resort

1st May – 31st October

Free group lessons:

- Gymnastics
- Swimming
- Football

Private lessons are subject to a fee

BABY SITTING SERVICE

1 – 12 Years

Gloria Serenity Resort
Gloria Golf Resort
Gloria Verde Resort

The nursing service is provided subject to a fee.

For babies/children over 1 years old, up to a maximum of 3 hours a day, service is provided subject to availability. Caring hours may not be divided during the day.

For babysitting service, please inform Guest Relations or Gogi Kids Club at least 24 hours in advance. For requests received on the same day, babysitting service is offered subject to availability.

GOGI MINI

4-12 Years

Gloria Serenity Resort
Children's playroom in the main building

- Playstation
- Handicraft activities

GOGI KIDS CLUB

4 – 12 Years

Many fun activities for our little guests, from handicraft activities, sports activities, competitions, shows, birthday organisations.

Gloria Golf Resort

Gloria Serenity Resort

- Child reception and registration desk

- Baby activity area
- Playroom (Lego, play dough, baby playground)

- Activity area
- Fully equipped kitchen
- Sleeping room (changing unit)

- Gymnasium
- Cinema room
- Mini amphitheatre

- Mini disco

Gloria Verde Resort

- Play and activity area

- Baby area

- Kitchen

- Open air cinema

- Mini golf course

- Activity and playground in the garden

- Mini play park

- Mini disco

GOGI FUN JUNGLE

1 – 14 Years

Gloria Golf Resort

Gloria Serenity Resort

Children under 5 years old can benefit from Fun Jungle under the supervision of their parents.

Our playgrounds in Gogi Fun Jungle:

Comfyland 1 - 6 years

Gogi Town 1 - 12 years

Crazy Jungle 5 - 12 years

Playstation & interactive Game Zone

5 - 14 years

TEENAGE CLUB

13 – 17 Years

Gloria Serenity Resort

Gloria Golf Resort

Gloria Verde Resort

1st June – 31st August

Outdoor sports and activities: mini football, darts, table tennis, basketball, football, water polo, aquapark.

INFANT AND CHILD NUTRITION

CHILDREN'S BUFFET

The children's buffet in the main restaurants of Gloria Hotels & Resorts is open from 01 May to 31 October.

Lunch 12:30 - 14:30

Dinner 19:00 - 21:30

BABY MENU & WHAT-WHEN-WHERE SERVICE

You can order from the baby menu that we have carefully prepared for your baby 24/7 and ensure that it reaches wherever you want, whenever you want.

With the What-When-Where Service, you can provide the recipe for your baby's food and ensure that it arrives wherever and whenever you want.

If you wish, you can prepare your baby's food yourself by using the Gogi Kids Club kitchen.

Specified services and special requests should be notified to guest relations. Related services are provided free of charge for all children aged 00 - 03,99 years staying in our Gloria Hotels & Resorts hotels.

HIPP BRAND PRODUCTS

- Feeding bottle formula
- Organic rice pudding
- Fruit juices
- Teas (for babies and nursing mothers)
- Cereal-based supplementary foods
- Organic biscuits
- Snacks
- Food in jars (organic fruit and vegetable, whole grain products)

Children's Activities	Location	Details	Summer Season	Winter Season
Babysitting service 1 - 12 years old	Gloria Serenity Resort Gloria Golf Resort Gloria Verde Resort	Additional charges apply	09:00 – 02:00	10:00 – 21:00
Gogi Mini 4 – 12 Years	Gloria Serenity Resort Located in the main building	Children's playroom Children under 4 years old can benefit under parental supervision	16:00 – 23:00	16:00 – 23:00
Gogi Kids Club 4 – 12 Years	Gloria Serenity Resort & Gloria Golf Resort (Common Use)	It is a common use area serving all Gloria Hotels & Resorts guests	1 April to 31 October 09:00 - 17:00 (under the supervision of Gogi Kids Club staff) 17:00 - 23:00 (Under the supervision of their families)	From 1 November to 31 March 10:00 - 17:00 (under the supervision of Gogi Kids Club staff) 17:00 - 21:00 (Under the supervision of their families)
Gogi Kids Club 4 – 12 Years	Gloria Verde Resort	It is a common use area serving all Gloria Hotels & Resorts guests	1 April to 31 October 09:00 - 17:00 (under the supervision of Gogi Kids Club staff) 17:00 - 23:00 (Under the supervision of their families)	1 November to 31 March 10:00 - 17:00 (under the supervision of Gogi Kids Club staff) 17:00 - 21:00 (Under the supervision of their families)
Gogi Fun Jungle 1 – 14 Years	Gloria Serenity Resort & Gloria Golf Resort (Common Use)	It is a common use area serving all Gloria Hotels & Resorts guests Children under 5 years old can benefit from Fun Jungle under the supervision of their parents	From 1 May to 31 October 10:00 - 12:30 13:30 - 23:00 (under the supervision of Gogi Fun Jungle staff)	Closed
Gogi Teenage Club 13 – 17 Years	Gloria Serenity Resort Gloria Golf Resort Gloria Verde Resort		1 June to 31 August 10:30 – 12:30 14:30 – 17:00 20:00 – 22:30	Closed
Eagle Team Sports Academy 5 – 13 Years	Gloria Serenity Resort & Gloria Golf Resort (Common Use) Gloria Verde Resort	Group lessons free of charge Private lessons are subject to a fee	1 May - 31 October	Closed
Trampoline	Gloria Golf Resort & Gloria Serenity Resort Resort is located on the beachfront	It is a common use area serving all Gloria Hotels & Resorts guests All children can benefit under parental supervision	Open	Closed
Gloria Mini Farm	Located between Gloria Serenity Resort and Gloria Golf Club	It is a common use area serving all Gloria Hotels & Resorts guests All children can benefit under parental supervision	09:00 – 21:00	09:00 – 18:00

Service dates/hours may vary

GLORIA EVENT & FIT GLORIA DAILY ACTIVITIES

Free services:

- Boccia
- Zumba
- Pilates
- Beach volleyball
- Aerobics
- Yoga

- Gymnastics
- Table tennis
- Mini football
- Basketball
- Dart
- Archery (at Gloria Verde Resort)

Services subject to a fee:

- Karaoke
 - Personal training
- Activities might change according to weather conditions.

Entertainment & Activity Areas	Concept	Location	Details	Summer Season	Winter Season
G-Venture	Bar & outdoor party and concert area	Located on the beach between Gloria Golf Resort & Gloria Serenity Resort	It is a common use area serving all Gloria Hotels & Resorts guests	21:00 – 00:00	Closed
Arena Amphitheatre	Bar & show area	Gloria Golf Resort and Gloria Serenity Resort	It is a common use area serving all Gloria Hotels & Resorts guests Has a capacity of 1.061 people	During the activity	Closed
Insomnia Night Club +18 Age	Bar & nightclub	Located in the Game Center at Gloria Serenity Resort	It is a common use area serving all Gloria Hotels & Resorts guests	23:00 – 02:00	23:00 – 02:00 Saturday only
Wurlitzer Karaoke Bar	Karaoke bar	Located in the Game Center at Gloria Serenity Resort	It is a common use area serving all Gloria Hotels & Resorts guests	16:00 – 00:00	16:00 – 00:00
Game Center	Entertainment centre	Located in the Game Center at Gloria Serenity Resort	It is a common use area serving all Gloria Hotels & Resorts guests Bowling (6 lanes), billiards, electronic games, virtual reality Game Centre services are subject to an extra charge	16:00 – 00:00	16:00 – 00:00
Verde Amphitheatre	Bar & show area	Gloria Verde Resort	Has a capacity of 350 people	During the activity	Closed
Neptuno Bar	Bar & entertainment area	Gloria Verde Resort	Gloria Verde Resort welcomes its guests with professional live music groups, DJ performances and concept parties	1 May - 15 October on certain days of the week 22:00 – 00:00	Closed
Verde Game Center	Entertainment centre	Gloria Verde Resort	Bowling (4 lanes), billiards, electronic games Game Centre services are subject to an extra charge	16:00 – 00:00	16:00 – 00:00
Tennis courts	Sport	Gloria Serenity Resort	There are 3 clay courts in total Court use & lighting is free of charge	09:00 – 21:00	09:00 – 21:00
Tennis courts	Sport	Gloria Golf Resort	There are 5 courts in total: 2 Hard Court 1 Synthetic Turf Tennis Court 2 Padel Tennis Court Court use & lighting is free of charge	09:00 – 21:00	09:00 – 21:00
Tennis courts	Sport	Gloria Verde Resort	There is 1 tartan court Court use & lighting is free of charge	09:00 – 21:00	09:00 – 21:00
Tennis lessons	Private Lesson	Gloria Serenity Resort Gloria Golf Resort Gloria Verde Resort	Private lessons and tennis equipment are available for a fee	Optional	Optional
Fit Gloria +16 Age	Gym	Gloria Serenity Resort Gloria Golf Resort Gloria Verde Resort	Use of the hall and equipment is free of charge, personal coaching services are chargeable	08:00 – 20:00	08:00 – 20:00

FIT GLORIA

Fit Gloria is equipped with Technogym brand fitness equipment.



GLORIA SERENITY RESORT

- Omnia
- Skill mill
- Rowing cardio
- Power plate
- Chin up
- Hyperextension coffee table
- Shuttle coffee table
- Bench coffee table
- Dumbbell set (4 kg - 32 kg)
- 4-way station
- Smith machine
- Leg press
- Biceps curl coffee table
- Cross over
- Shoulder press machine
- Leg extension-curl
- Abduction-adduction
- Chest press
- Abdominal machine
- Stair climbing
- Elliptical
- Elliptical-stepper
- Treadmill
- Horizontal bicycle
- Vertical bicycle
- Technogym home set



GLORIA GOLF RESORT

- Leg press machine
- Adductor machine
- Leg curl machine
- Reverse fly machine
- Abdominal crunch machine
- Vertical traction machine
- Shoulder press machine
- Crunch bench
- Biceps curl bench
- Chest press machine
- Seated row machine
- Smith machine
- Multi cable machine
- Bench
- Skillrow
- Exercise bike
- Elliptical
- Elliptical stepper
- Spinning bike
- Climbmill
- Power plate
- Home set
- Dumbbell set (2 kg - 22 kg)
- Z bar
- Long straight bar
- Short straight bar
- Treadmill



GLORIA VERDE RESORT

- Spinning bike
- Elliptical bike
- Horizontal bicycle
- Treadmill
- Climbmill
- Air walker
- Conditioning shovel
- Smith machine
- Biceps stand
- Flat coffee table
- Crunch bench
- Chin up
- Dual adjustable pulley trunk / lower body / upper body machine
- Chest press machine
- Low row machine
- Abductor / adductor machine
- Leg extension / curl machine
- Leg press machine
- Vertical traction machine
- Shoulder press machine
- Dumbbell set (4 kg - 22 kg)





POWERED BY
TRACKMAN

GLORIA GOLF CLUB



Gloria Hotels & Resorts guests have the privilege to use the only 45-hole golf course of the Mediterranean Riviera with its two 18-hole championship courses and a 9-hole Verde Golf Course, designed by the famous golf architect Michel Gayon and preferred not only by golf enthusiasts but by professionals as well. Gloria Golf Club has taken a major step into the world of driving range technology, by adding a TrackMan system that looks set to revolutionise the Turkish resort's range experience as the very first of its kind to be installed by a Turkish resort.

Gloria Golf Training Academy & Driving Range
5 Putting Greens
6 Bunker Greens
7 Chipping & Pitching Greens

The Gloria Golf Training Academy and range area is the largest purpose built training facility in Turkey. Trackman Range, the state-of-the-art system is used by more than 10,000 professionals and instructors across the world, utilising a doppler radar system to display a variety of fun games and ball tracking software to 27-inch touchscreens in each bay. For more experienced players who are looking to master their game ready for application out on the three courses at Gloria Golf Club, the software allows users

to track and view ball speed, carry, launch angle, precise distances and shot shaping. This is displayed across the 48 screens on the range, giving golfers the crucial information required to improve their game. Lessons for both individuals and groups are available from Our PGA and TPGA qualified teaching professionals, Nike, Taylor Made and Titleist golf clubs are available to use, while the indoor Arena uses Flightscope and SAM putt lab technology. The facilities include five putting greens, six bunker greens, seven chipping and pitching greens, a wedge practice area, 48 covered range bays and 50 grass tee bays. The Gloria Golf Training Academy covers an area of 3500 m².
Greens: Bermuda grass tifway 328
Fairway: Bermuda grass tifway 419

The Gloria Golf Club, designed by the acclaimed French golf architect, Michel Gayon, offers a total of 45 holes with two 18-hole championship courses and a 9-hole course. It is the region's and Turkey's largest golf club, even Europe's second largest one. Located in one of the world's finest holiday destinations in Belek, Antalya, Gloria Hotels & Resorts is listed among the world's top hotels for its architecture, services and amenities. Gloria Golf Club is recognized as one of the best in the region, which is Turkey's golf heaven known to offer

a favorable climate 12 months of the year. It also hosts internationally acclaimed golf events.

Gloria Golf Club courses have been crowned with esteemed and selected awards of the world of golf for their excellent technical maintenance and superior design. First Class services including fine gourmet experiences are presented to our much valued guests. You will be enchanted by the nature, wildlife and weather our region boasts. Our first class experience will make you feel at home. We, as Gloria, feel that you are a much valued part of our great family. Here, we present you with the finest, most privileged and selected experiences to enjoy.

- Gloria "Old" Golf Course (18-hole, 72 Par, 6529 m)
- Gloria "New" Golf Course (18-hole, 72 Par, 6523 m)
- Gloria "Verde" Golf Course (9-hole, 35 Par, 2923 m)

Gloria Select Courses

- The Gloria Select Courses with 18-hole combine the best Gloria Courses:
- Select New Course (18-hole, Par 72, 6350 m)
- Select Old Course (18-hole, Par 72, 6492 m)

GOLF	SUMMER SEASON	WINTER SEASON
Golf & Golf Lessons (extra)	With reservation	With reservation
Group Golf Lessons at Gloria Golf Club (1 hour on Monday, Wednesday, Friday) Capacity maximum 40 person	Free between 15.06-31.08 10.00 - 11.00	Closed



GLORIA SPORTS ARENA



LOCATION

Gloria Sports Arena is a modern sports complex with indoor, outdoor and aquatic sports facilities. It is built on 105.000 m² (10.5 hectare area) in Belek-Antalya-Turkey, where over 50 different sports disciplines and camps are hosted. Facilities are equipped and built by using the most modern technological developments in sports.

OUTDOOR SPORTS

Archery, Beach Volleyball, Cycling (Mountain Bike, Road Bike), Field Hockey, Football, Golf, Rugby, Tennis, Track & Field.
Running : Sprints, Middle - Long Distance, Relay Races, Hurdling. Jumping: Long-Triple-High Jump, Pole Vault.
Throwing : Shot Put, Discus Javelin, Hammer Throw.
Combined Events : Men's Decathlon, Women's Heptathlon, Triathlon
Other Outdoor Sports : Climbing (Bouldering, Sport Climbing), Ultimate Frisbee, Slacklining.

INDOOR SPORTS

Badminton, Basketball, Boxing Fencing, Gymnastics, Handball, Judo, Table Tennis, Taekwondo, Volleyball, Weightlifting, Wrestling.
Other Indoor Sports: Powerlifting, Dancesport, Futsal, Martial Arts (Aikido, Jiu-Jitsu, Karate, Kickboxing, K1, Muay Thai), Group Classes (Indoor cycling, Cross training, Suspension training)

AQUATIC SPORTS

Diving (1-3 m Springboard, 3-5-7, 5-10 m Platform), Swimming, Synchronized Swimming Water Polo, Other Aquatic Sports: Scuba Diving (Pool), Underwater Hockey, Underwater Rugby.

MEETING ROOMS	WIDTH	LENGTH	AREA	HEIGHT	BANQUET	U SHAPE BANQUET	THEATER	CLASS
Aspendos Meeting Room	6,2 m	10,2 m	63,24 m ²	3,5 m	20 Pax	22 Pax	40 Person	24 Person
Olympos Meeting Room	8,6 m	10,2 m	87,5 m ²	3,5 m	30 Pax	22 Pax	60 Person	36 Person
Termessos Meeting Room	6,5 m	10,2 m	66,3 m ²	3,5 m	20 Pax	22 Pax	40 Person	24 Person
Aspendos & Olympos	14,8 m	10,2 m	150,96 m ²	3,5 m	50 Pax	40 Pax	120 Person	80 Person
Olympos & Termessos	15,1 m	10,2 m	154,02 m ²	3,5 m	50 Pax	40 Pax	120 Person	80 Person
Aspendos & Olympos & Termessos	21,3 m	10,2 m	217,26 m ²	3,5 m	80 Pax	60 Pax	160 Person	110 Person



GLORIAN MEMBER CLUB



Join the Glorian Member Club and enjoy exclusive benefits from the spa to the golf facilities and more.

Gloria Loyalty Program aim at corroborating the bond between guests and the brand by offering advantages to Gloria Hotels & Resorts guests.

for detailed information;



WALKING AND RUNNING PATH



Gloria Hotels & Resorts offers a peaceful walking trail and running path through lush green nature and bird calls.

walking and running route map



GLORIA HOTELS & RESORTS - MAP

GLORIA HOTELS & RESORTS - MAP





Because here is Gloria

